



DISTRICT 186
SPRINGFIELD PUBLIC SCHOOLS

OUR SCHOOLS

OUR FUTURE

VOLUME 1:
VISIONING

OUR SCHOOLS OUR FUTURE

CONTENTS

district vision

letter from the superintendent	4
our vision	5



The Chamber of Commerce and the Q5 Strategic Leadership Council recommended in their final report of the 2016 Business Perceptions Survey of District 186 to conduct a comprehensive facilities study as an important next step in understanding how to improve our school structures and space so that they are 21 st century learning facilities.

In February 2017, District 186 retained the services of BLDD Architects through a rigorous RFP process to help us study our facilities, and engage the greater Springfield community to develop a long-term facilities master plan. The goal is to help dream our next phase of building projects to support 21 st century learning in District 186.

This document is not about the actual work or design of schools, but about creating a vision as we move forward. The good news is that we have not sat idle over the last decade. Since 2009, we have completed close to 86 million dollars in capital improvement work using Health Life Safety and Qualified Zone Academy Bonds so that our facilities are healthy and environmentally comfortable with all life cycle replacement needs maintained.

Thank you to everyone who participated in this process, making this vision a true community effort. These are OUR SCHOOLS. This is OUR FUTURE.

You have helped us to see our preferred future so that we can take steps to get there. I'm excited to work together as we make it a reality for Springfield Public School District 186.

Jennifer Gill
Superintendent
Springfield Public Schools



OUR SCHOOLS

OUR FUTURE

OUR VISION

for the future of SPS facilities:



Future-focused learning environments that support the success of all students.



Smartest use of the District's financial resources.



Places our community can gather and be proud of.

FACILITIES MASTER PLAN PROCESS OVERVIEW



www.sps186.org/ourschoolsourfuture
 Twitter: @schooldist186
 Facebook.com/District186



This **VISION** report reflects the **first phase of work** completed from January-June 2017 by a team of district leadership, community members, teachers, and architects.

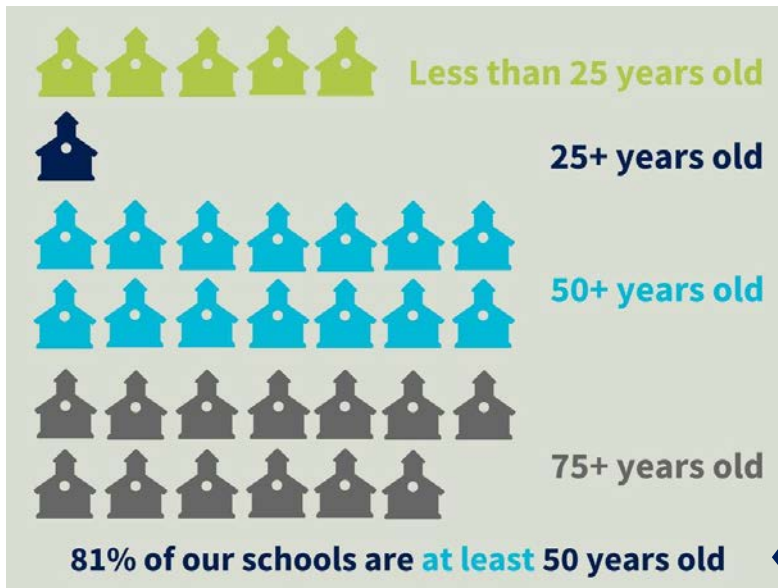
The next phase of work (Sept-Dec 2017) will involve the **development of potential solutions** to address district-wide facility challenges. A wide range of solutions will be explored, and will be evaluated based on specific measures developed by the community during the visioning process. All potential master plan solutions should:

- Be measured against the SPS planning principles
- Meet the SPS educational standard
- Prioritized according the SPS hierarchy of need



WHERE WE ARE

CURRENT CONDITIONS



The Springfield Public School District currently operates 33 buildings, which provide a safe place for the development and growth of our greatest assets: **15,000+ unique students and their dedicated teachers.**

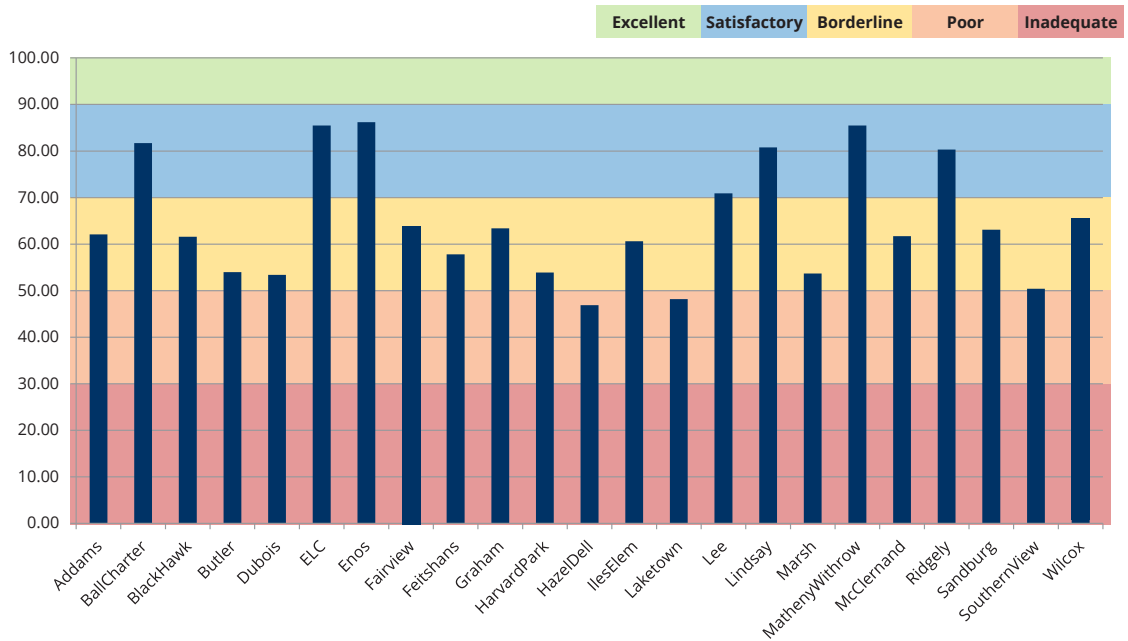


Necessary investments to repair these physical assets has been estimated by district staff to total nearly \$100 million.*

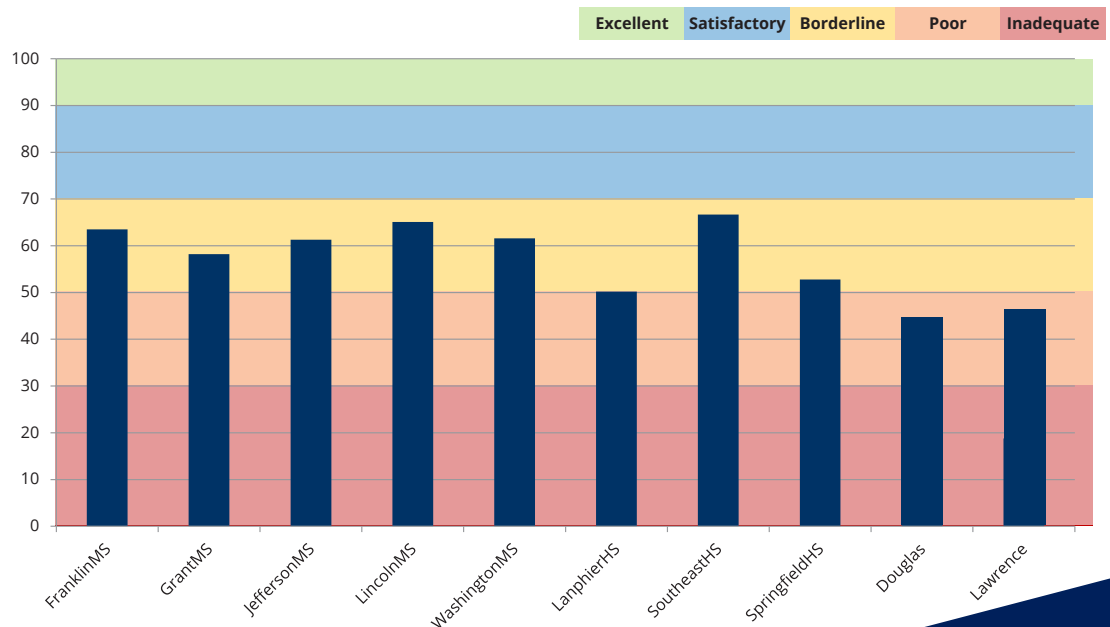
But physical needs are only half of the story. Our schools need to FUNCTION well, and support modern educational delivery.

A professional assessment revealed some buildings that do a good job of that (do we name those here?), according to standards developed by the Council of Educational Facility Planners International.* However, functional suitability was either “borderline” or “poor” for the majority of District 186 facilities.

Facility Functional Suitability - Elementary Schools

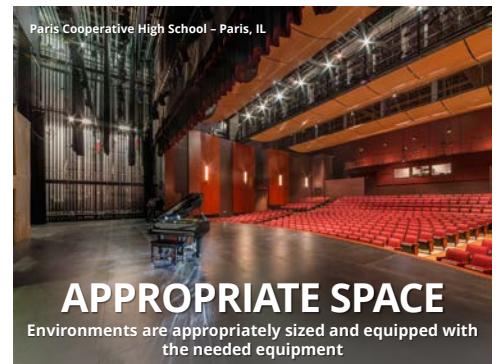


Middle & High Schools



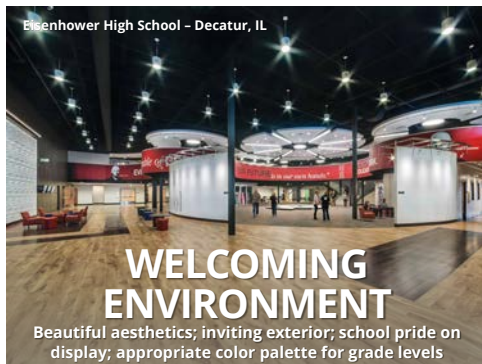
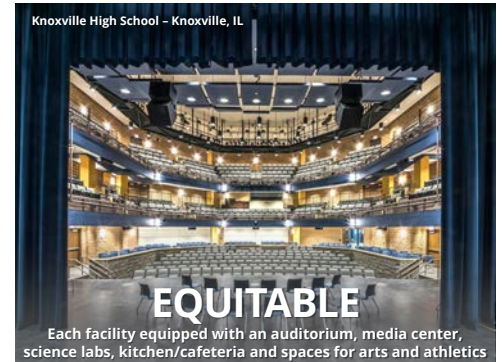
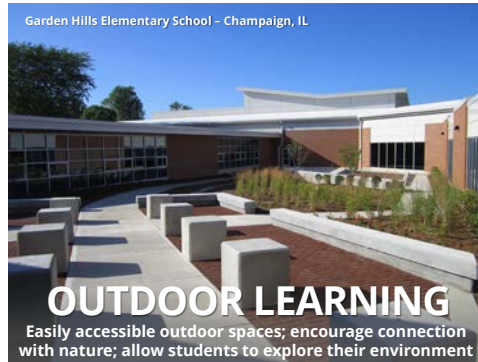
WHERE WE WANT TO GO

21ST CENTURY PROGRAMS & FACILITIES



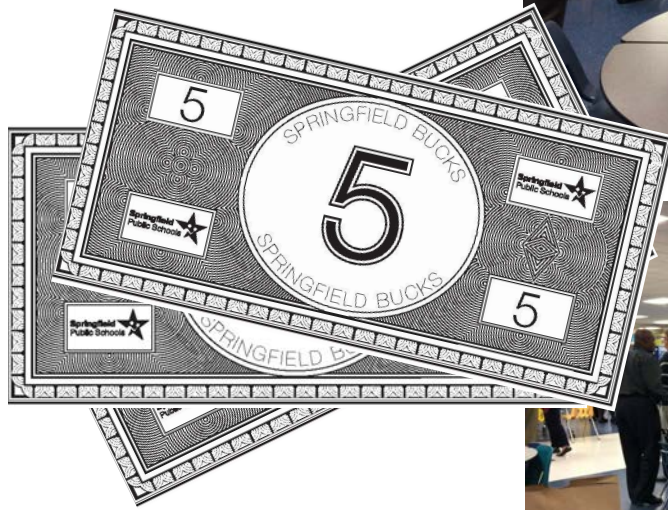
A 'virtual tour' of schools in peer districts illustrates places that support modern educational program offerings, meet the needs of 21st century learners, and prepare them for their future.

We are preparing students for jobs that don't even exist yet.



WHERE WE WANT TO GO

Participants were asked to “put on their board member hat” and spend limited “Springfield Bucks” on a wide range of planning principles. The result was a focused list of **shared goals for District 186’s educational facilities.**



- **Equitable** **680**
- **Student - Centered** **525**
- **Safety/Security** **490**
- **Technology** **420**
- **Infrastructure** **340**
- **Welcoming Environment** **310**
- Appropriate/Adequate Space 275
- Health/Wellness 200
- Flexible 140
- Sustainability 125
- Movement/Flow 120
- Collaboration 95
- Comfort 90
- Community Use 50
- Outdoor Learning 45
- Storage 35

PLANNING PRINCIPLES

District facilities will be:

EQUITABLE

All facilities will provide equitable access to programs, activities, and services

STUDENT CENTERED

Allowing students to be active participants in the learning process; purposeful furniture, fixtures & equipment; ability to access technology

SAFE AND SECURE

Transparent environment; easily observed; controlled access; creating a feeling of home

UP-TO-DATE INFRASTRUCTURE

High quality and sufficient lighting; equipped with adequate outlets for various technology; ability to connect to global community of learners

WELCOMING ENVIRONMENT

Beautiful aesthetics; inviting exterior; school pride on display; appropriate color palette for grade levels



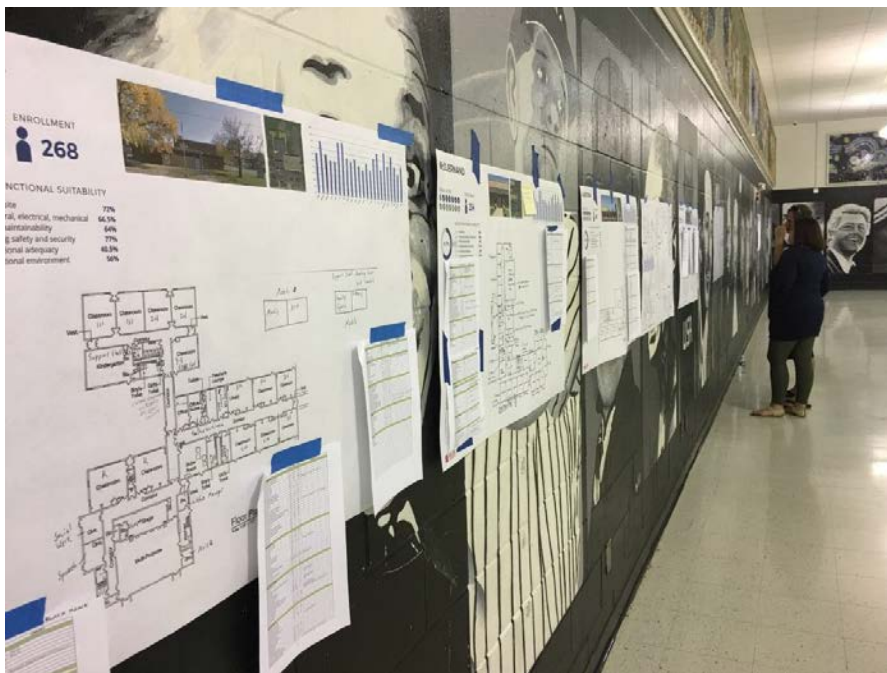
WHERE WE WANT TO GO

EDUCATIONAL STANDARD

The Springfield Public Schools “Educational Standard”* is a summary of spaces needed to meet the needs of curriculum and instruction in specific types of facilities. This standard was developed by the District’s principals and Instructional Support Services committee for grade level groupings (elementary, middle and high school), with the input of PK12 design experts familiar with emerging trends.

An educational standard is an invaluable tool to ensure that equitable learning environments are developed for all facilities.

Community participants completed the important task of “Identifying the Gaps” at all 33 buildings within District 186, working alongside administrators and teachers from each facility.*



PRIORITIZATION

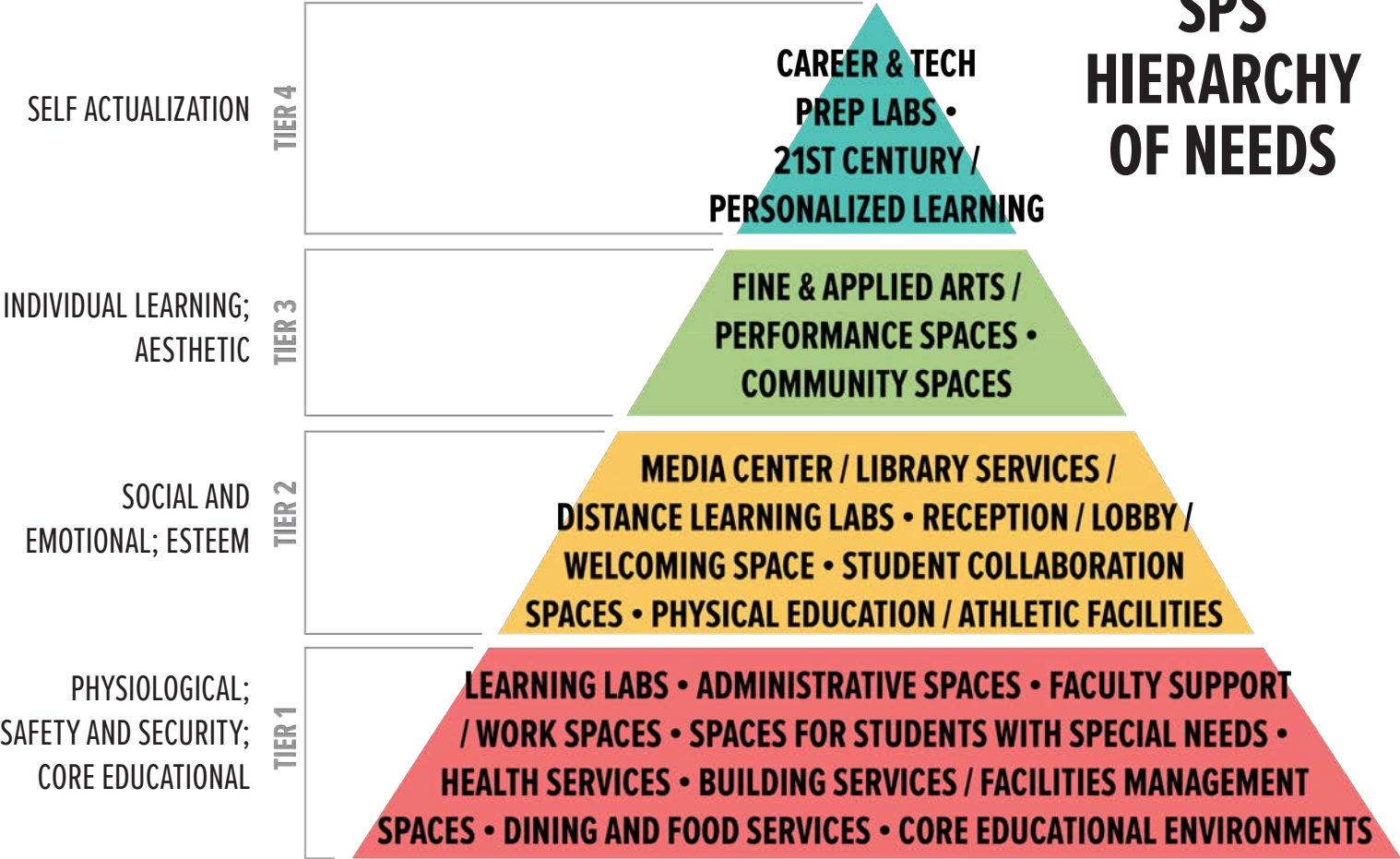
Maslow's famous hierarchy of needs pyramid succinctly illustrated how our basic physical needs must be met before social, emotional development and higher thinking can occur. The same concept can be applied to the wide range of facility needs within District 186.

In the development of solutions, facilities will address the most important educational needs first, according the following hierarchy of needs:

MASLOW'S HIERARCHY OF NEEDS



SPS HIERARCHY OF NEEDS





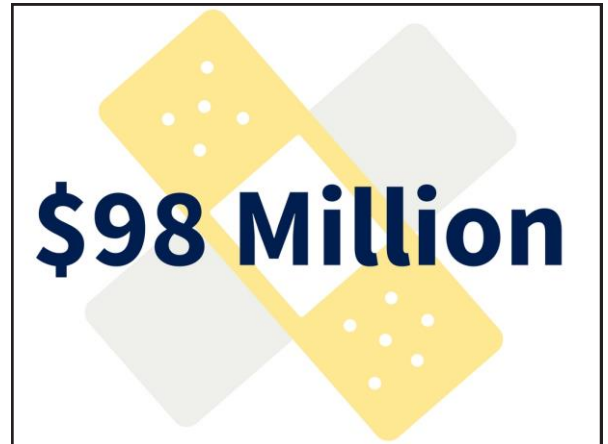
DISTRICT 186
SPRINGFIELD PUBLIC SCHOOLS

OUR SCHOOLS

OUR FUTURE

FACILITIES MASTER PLAN
SUPPLEMENTAL
INFORMATION

COMMUNITY ENGAGEMENT SESSION #1



Springfield Public Schools **OUR SCHOOLS OUR FUTURE**

Why We Need You

“The days when a superintendent and the school board can sit in a room and make decisions about the future of a district or the future of a community are long gone.”

Dr. Chris Nicastro
Commissioner of Education — Missouri
Former Superintendent — Hazelwood (MO) School District

COMMUNITY ENGAGEMENT

Public won't support what it doesn't understand	Discovery is more powerful than persuasion
Put on their "board member hat"	Built from the ground up

KEY OUTCOMES

Internal/external unity	Board + Staff + Parents + Community
Bulletproof plan (what and how)	Public permission for meaningful change

PUBLIC ENGAGEMENT CHARGE

To formulate a long-term facilities plan that maximizes the opportunities to provide a quality education for all Springfield 186 students, optimizing the effectiveness of the District's educational facilities. The facilities plan will need to develop recommendations addressing the planning issues (long-term planning needs as well as urgent, short-term planning needs) facing the school district by engaging the community, uncovering community aspirations for the future of the school district's facilities, and developing a plan that is built upon community input.



Process Overview

MASTER PLANNING PROCESS



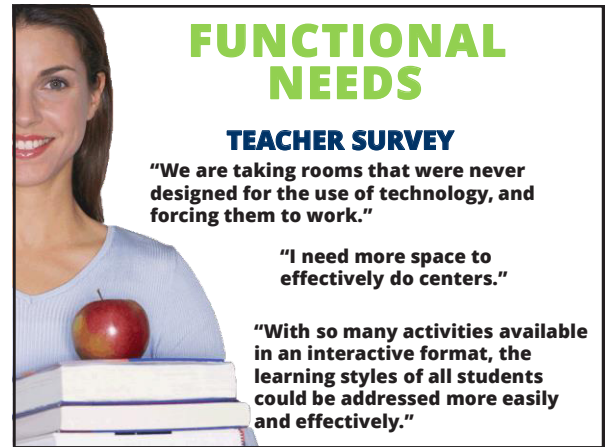
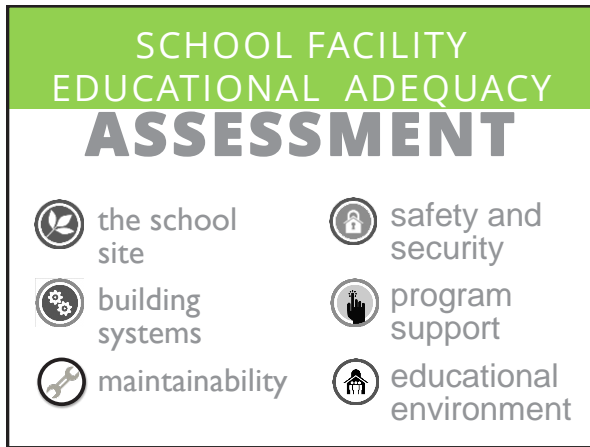
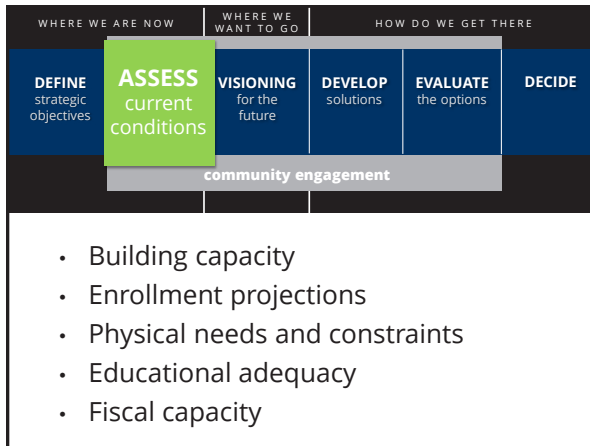
Where We Are Now



- Align facilities with educational programs
- Maximize effectiveness of district resources
- Address major planning considerations for the future
- Arrive at an optimal destination

COMMUNITY ENGAGEMENT SESSION #1

supplemental information



Researchers predict that **65%** of today's grade schoolers...

...will hold jobs that don't yet exist...

We are currently preparing students for jobs that don't yet exist...in order to solve problems we don't even know are problems yet ...using technologies that **haven't been invented.**

The U.S. Department of Labor estimates that today's learner will have 10-14 jobs by the age of

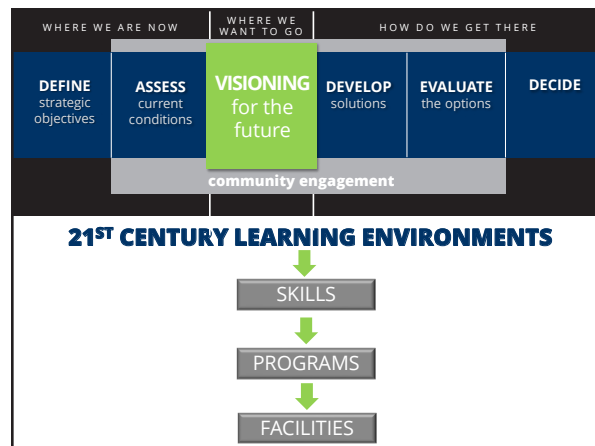
38

90% of the world's data has been generated in the past **two years.**

The amount of new **technical information** is doubling every 2 years...

For students starting a 4 year technical degree, **this means that...**

...half of what they learn in their first year of study **will be outdated by their third year of study.**



COMMUNITY ENGAGEMENT SESSION #1

supplemental information



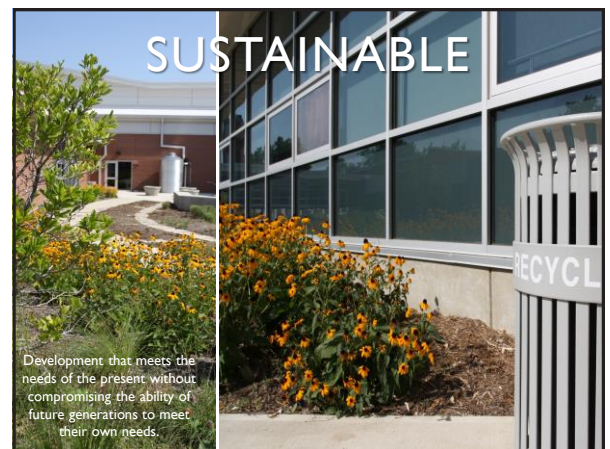
21ST CENTURY Learning Environments

- Learning is no longer optional
- Meet the needs of every child
- Engage students in learning
- Anywhere/anytime learning
- Support the 4C's:
**collaboration - communication
creativity - critical thinking**

characteristics of

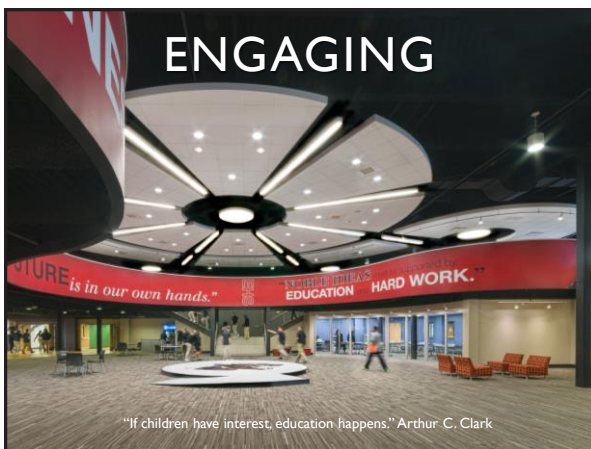
FUTURE FOCUSED SCHOOLS

How is "FORM" changing to follow "FUNCTION"?



COMMUNITY ENGAGEMENT SESSION #1

supplemental information



COMMUNITY ENGAGEMENT SESSION #1

supplemental information



COMMUNITY ENGAGEMENT SESSION #1

How Do We Get There

WHERE WE ARE NOW		WHERE WE WANT TO GO		HOW DO WE GET THERE	
DEFINE strategic objectives	ASSESS current conditions	VISIONING for the future	DEVELOP solutions	EVALUATE the options	DECIDE
community engagement					

- Brainstorm initial concepts
- Gather input
- Develop refine solutions



<p>OPTION # 1 K-8 Campus (East/Middle) → 4-8 (Central) Cost: \$ 37,240,874</p> <p>New K-2 (E) + 3-5 (M) 4-8 + FA Aud. (C)</p> <p>Concept: • New K-2 (E) + 3-5 (M) • 4-8 + FA Aud. (C)</p> <p>1</p>	<p>OPTION # 2 Current Grade / Site Alignment Cost: \$ 25,741,423</p> <p>4-8 + K-2 Addition (M) 3-5 (C)</p> <p>Concept: • 4-8 with K-2 Primary Addition (M) • 3-5 (C)</p> <p>2</p>
<p>OPTION # 3 K-8 Campus (Central) → 4-8 (Middle) Cost: \$ 33,351,940</p> <p>Retired (E) + 4-8 + FA Aud. (M) New PreK-5 (C)</p> <p>Concept: • Retired (E) + 4-8 + FA Aud. (M) • New PreK-5 (C)</p> <p>3</p>	<p>OPTION # 4 K-8 Campus (Central) → 4-8 (Middle) Cost: \$ 33,351,940</p> <p>Retired (E) + 4-8 w/ Additions (M) K-5 Campus (C)</p> <p>Concept: • Retired (E) + 4-8 w/ Additions (M) • K-5 Campus of Additions + Aud. (C)</p> <p>4</p>

WHERE WE ARE NOW		WHERE WE WANT TO GO		HOW DO WE GET THERE	
DEFINE strategic objectives	ASSESS current conditions	VISIONING for the future	DEVELOP solutions	EVALUATE the options	DECIDE
community engagement					

- Identify strengths & weaknesses
- Assess how solutions address needs & established goals
- Objective comparison
- Cost / benefit analysis

Supplemental information

COMMUNITY ENGAGEMENT SESSION #1

supplemental information



QLEO
Quantified Learning Environment Outcomes

Master plan modeling and analysis software



LIFE CYCLE COSTS

1
How much does it cost to implement and operate?

2
How well does it function as a school?

EDUCATIONAL ADEQUACY

CASE STUDY

DISTRICT OVERVIEW

- Aging infrastructure & buildings
- Declining enrollment
- Inequitable facilities

SCENARIOS

- Status Quo
- Scenario 6
- BLOG Scenario

QLEO Data Input

General

- School
- Grades Served
- Capacity
- Enrollment
- Square Footage

Costs

- First Costs
- Operation & Maintenance
- Energy Costs
- Building Renewal Costs

Educational Adequacy

- Site
- Building Systems
- Maintainability
- Safety and Security
- Program Support
- Educational Environment

Scenario Modeler

Scenario Name: Status Quo
Scenario Starting Year: 2012

Include in Modeling: Create New Scenario:

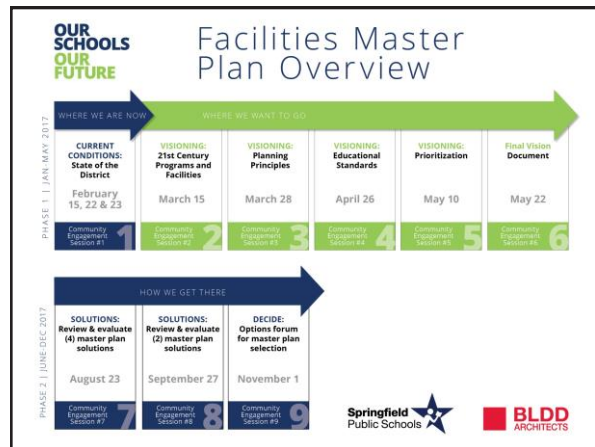
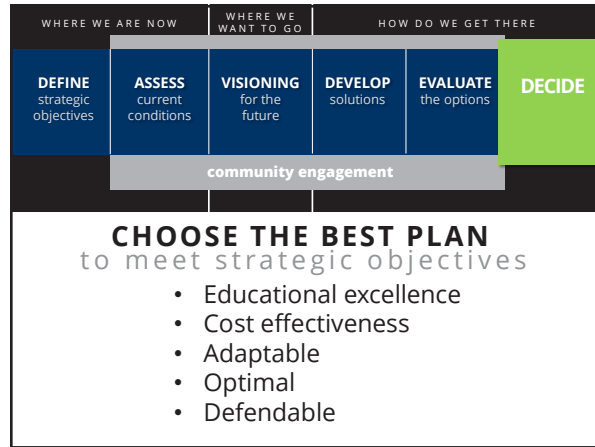
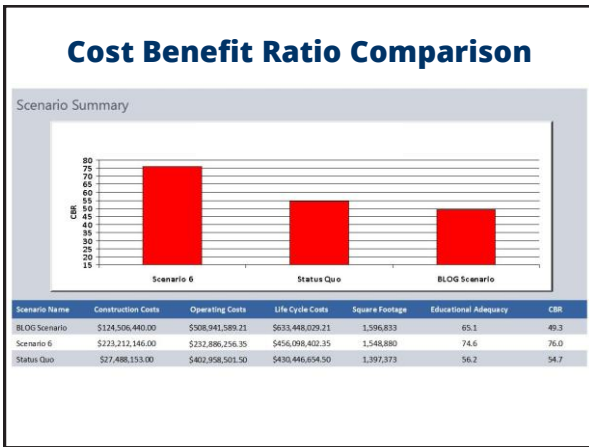
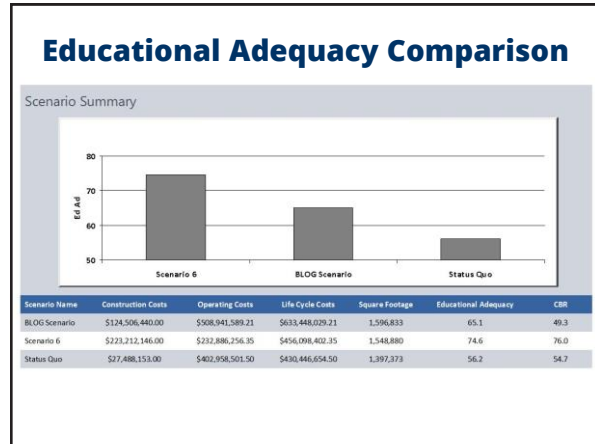
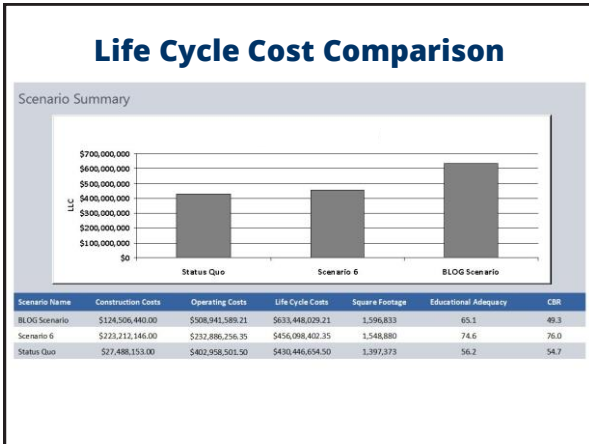
Educational Adequacy: 56 CBR: 54.7 First Costs: \$27,488,153 Life Cycle Costs: \$430,446,654 Square Footage: 1,397,373

Option	Facility	Grades	Capacity	First Costs	Educational Adequacy
Status Quo	Bode Middle School	7-8	370	\$56,898.00	48.6
Status Quo	Robinson Middle School	7-8	355	\$88,887.00	67.5
Status Quo	Spring Garden Middle School	7-8	411	\$1,225,754.00	52.8
Status Quo	Truman Middle School	7-8	481	\$1,393,045.00	55.8
Status Quo	Central High School	9-12	1600	\$3,307,234.00	52.2
Status Quo	Lafayette High School	9-12	1000	\$1,365,143.00	58.2
Status Quo	Benton High School	9-12	920	\$1,446,603.00	46.4
Status Quo	Hesse Elementary School	K-6	336	\$1,232,651.00	63.2
Status Quo	Coleman Elementary School	K-6	414	\$445,615.00	64.9
Status Quo	Edison Elementary School	K-6	366	\$1,134,571.00	47.8
Status Quo	Elson Elementary School	K-6	294	\$957,907.00	79.6
Status Quo	Hall Elementary School	K-6	226	\$2,358,604.00	40.5
Status Quo	Skath Elementary School	K-6	420	\$1,171,205.00	54.2
Status Quo	Hansville Elementary School	K-6	157	\$871,837.00	45.7
			Capacity	10,230	

Enrollment: 11,300
Capacity: 10,230

COMMUNITY ENGAGEMENT SESSION #1

Supplemental information



COMMUNITY ENGAGEMENT SESSION #1

Small Group Work Activity

Small Group Work Activity

Select a Recorder and Facilitator

Recorder Responsibilities –

- Complete the information on the group's worksheet

Facilitator Responsibilities—

- Facilitate discussion
- Keep group focused/on task
- Report group's information

Small Group Worksheet

- Information on worksheet should reflect consensus/general agreement of group members
- Monitor progress to complete the worksheet in allotted time
- Only group recorder's worksheet will be collected

Work Activity #1 Questions

What did you learn that **surprised** you?

Work Activity #1 Questions

What are your **concerns** about district facilities that should be addressed by this facilities plan?

Work Activity #2 Questions

What **questions/concerns** do you hope to have answered through this process?

COMMUNITY ENGAGEMENT SESSION #1

Small Group Work Activity Reporting

Don't miss session #2!

VISIONING: 21st Century Programs and Facilities

Wednesday, March 15, 2017
6:00 p.m. – 7:30 p.m.
Lanphier High School

Our Schools Our Future Website



<http://www.sps186.org/ourschoolsourfuture/>

Springfield
Public Schools  **OUR
SCHOOLS
OUR
FUTURE**

Thank You!

s u p p l e m e n t a l i n f o r m a t i o n

COMMUNITY ENGAGEMENT SESSION #2

Springfield Public Schools **OUR SCHOOLS OUR FUTURE**

VISIONING: 21st Century Programs and Facilities

Community Engagement Session #2

BLDD ARCHITECTS

Springfield Public Schools **OUR SCHOOLS OUR FUTURE**

AGENDA

- Work to Date
- 21st Century Environments
 - How Can it Happen?
 - What Has Changed?
 - Why is This a Challenge?
 - How Should Our Buildings Respond?
- Small Group Work/Report Out

Community Engagement Session #1

CURRENT CONDITIONS: State of the District

250 Attendees

Springfield High

Lanphier High

Southeast High

“What did you learn that surprised you?”

- Age of buildings
- Number of mobile units
- Need for modern learning environments
- Lack of auditorium at Lanphier
- Maintenance costs

“What did you learn that concerned you?”

- Safety and security
- Funding
- Equity between buildings
- Keeping up with technology
- Attracting people to our District

“What questions/concerns do you hope to have answered through this process?”

- How has this worked with other Districts?
- How will we pay for it?
- How will the projects be prioritized?
- How will we build community support?

COMMUNITY ENGAGEMENT SESSION #2

supplemental information



2005 Needs Assessment
Board of Education sets out to address facility needs

2009 Phase 1
Elementary schools
Funding approach:
- 1% countywide school facilities tax = \$86 million

2016 Master Plan
Remaining elementary & high schools
Funding approach:
- Bond referendum passed with 66% voter support
- Bond = \$186.4 million
- District funds = \$25 million

2022 Phase 2 Complete

Total = \$294 million

Garden Hills Elementary School

How Can it Happen?

CASE STUDY

Springfield Public Schools 186



2007 Facilities Study

2009 Capital Improvements
Funding approach:
- QZAB = \$5 million
- Health & Life Safety = \$25 million

2010
Funding approach:
- Health & Life Safety = \$56 million

2013 Matheny-Withrow Elementary
Constructed using HLS funds

2014 Enos Elementary Completed
Constructed using HLS funds

Total = ??? million

Matheny-Withrow Elementary School



VISIONING for 21st Century Programs and Facilities

What Has Changed?



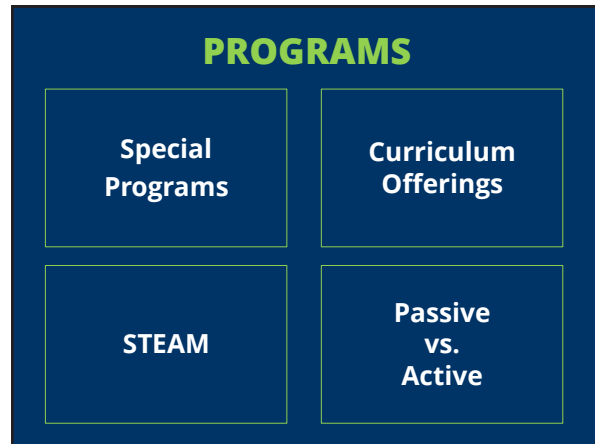
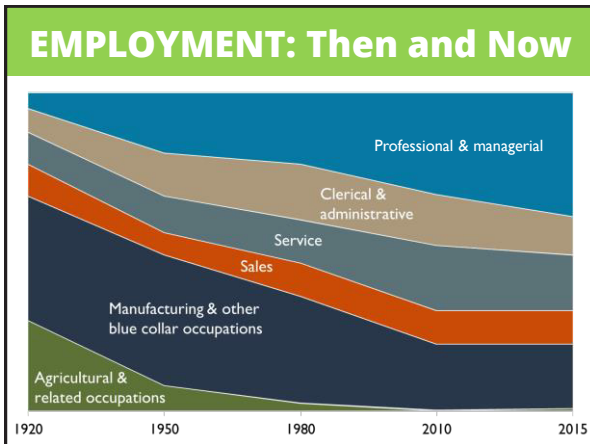
- **Jobs**
- **Programs**
- **Delivery**

JOBS

Most Promising Jobs of 2017

1. Hospitalist
2. Pharmacist
3. Sales Engineer
4. Site Reliability Engineer
5. Product Manager
6. Financial Analyst
7. Technical Program Manager
8. Program Manager
9. Data Engineer
10. Scrum Master
11. Software Engineer
12. Clinical Nurse
13. Physician Assistant
14. Business Analyst
15. Tax Manager
16. Data Architect
17. Anesthetist
18. Analytics Manager
19. Customer Success Manager
20. Medical Director

COMMUNITY ENGAGEMENT SESSION #2



CURRICULUM: Then and Now

Social Studies

1960	Today
American History	Adv. World History
Soc. Prob.	AP European History
Social Studies	AP Psychology
Western History	AP US Government
	AP US History
	Basic Law
	Economics
	Government
	Psychology
	Sociology
	US History
	World Geography
	World History

CURRICULUM: Then and Now

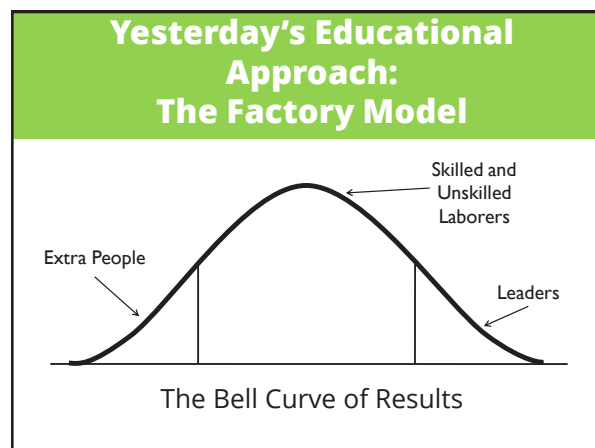
Business Education

1960	Today
Basic Business	Accounting 1
Bookkeeping	Business Mrkt. Mgmt.
Business Law	Business/Tech Conc.
Office Practice	Computer Applications
Shorthand	Consumer Education
Transcription	Co-op Occupations 1-2
Typing 1-3	Keyboarding
	Multimedia
	Video Production 1-4
	Web Design/Media Dev't
	Yearbook Production 1-2

CURRICULUM: Then and Now

Special Education

1960	Today
Not required	<ul style="list-style-type: none"> Life Skills PE Health Adaptive PE Life Skills Science Basic Science Life Skills Social Studies Geography Current Events Civil Law Social Interactions Cross CAT/SED Business Consumer Education Computer Skills Careers VCE 1-3 VCE Job Cross CAT/SED Family & Consumer Science Home Arts Childcare Parenting Social Problems Social Interaction Skills Cross CAT/SED Language Arts Read 180 English Foundations 1-4 Cross CAT/SED Mathematics Foundations of Algebra 1 Foundations of Geometry Foundations of Algebra 2 Cross CAT/SED PE Health Drivers Education Adaptive PE Cross CAT/SED Resource Learning Strategies General Physical Science General Biology General Earth Science US Geography World History US History Government



COMMUNITY ENGAGEMENT SESSION #2

supplemental information

EDUCATIONAL DELIVERY

Problem solving vs. Memorization	Technology
Gradual Release of Responsibility (GRR)	Learning Styles

A. Verbal-Linguistic <small>The ability to use words effectively, whether orally or in writing.</small>	B. Logical-Mathematical <small>The capacity to use numbers effectively and to reason well.</small>	C. Visual-Spatial <small>The ability to perceive the visual-spatial world accurately and to perform transformations upon those perceptions.</small>
D. Intrapersonal <small>Recognizing characteristics in one's self, including emotions, uniqueness, strengths and weaknesses.</small>	What is Your Learning Style?	E. Interpersonal <small>Understanding and being sensitive to other people's moods, wishes, and motivations; being able to work with a group.</small>
F. Musical <small>The capacity to perceive, discriminate, transform, and express musical forms.</small>	G. Bodily-Kinesthetic <small>Expertise in using one's whole body to express ideas and feelings and the ability to use one's hands to produce or transform things.</small>	H. Naturalistic <small>Relating to one's surroundings; identifying and distinguishing different plants, animals, and other aspects of nature.</small>

**OUR SCHOOLS
OUR FUTURE**

VISIONING for 21st Century Programs and Facilities

Why is This a Challenge?

**OUR SCHOOLS
OUR FUTURE**

VISIONING for 21st Century Programs and Facilities

How Should Our Buildings Respond?

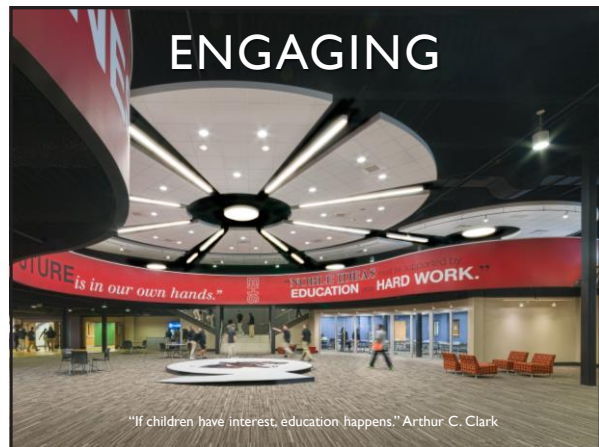
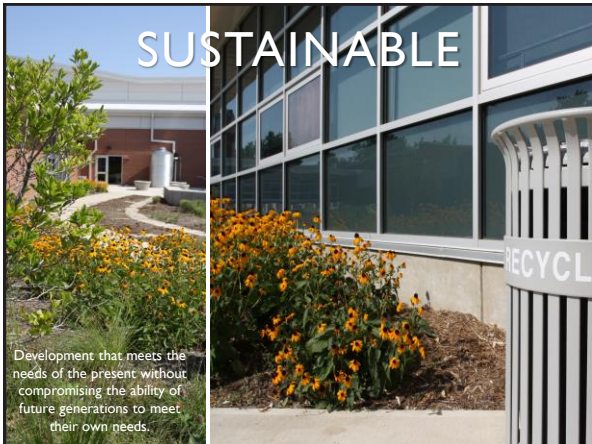
21ST CENTURY Learning Environments

- Learning is no longer optional
- Meet the needs of every child
- Engage students in learning
- Anywhere/anytime learning
- Support the 4C's:
collaboration - communication
creativity - critical thinking



COMMUNITY ENGAGEMENT SESSION #2

supplemental information



COMMUNITY ENGAGEMENT SESSION #2

supplemental information



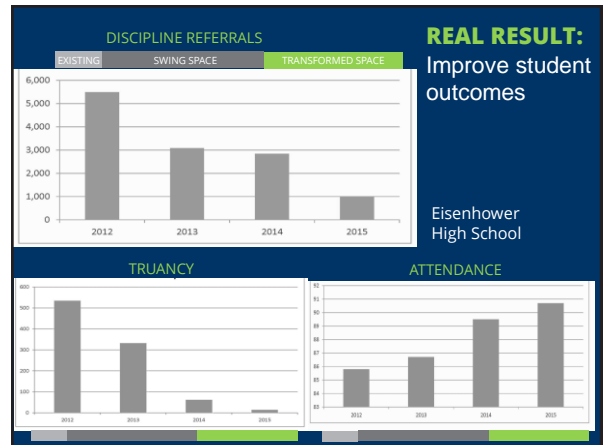
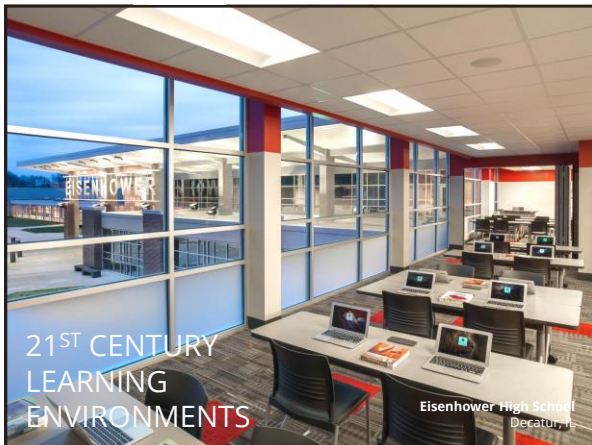
COMMUNITY ENGAGEMENT SESSION #2

supplemental information



COMMUNITY ENGAGEMENT SESSION #2

supplemental information



FACILITIES AFFECT PERFORMANCE

The most distinctive classroom characteristics that relate to the improvement of the pupils' academic achievement.

- **Light** – Natural light; high quality and sufficient quantity of electrical lighting
- **Choice** – Purposeful furniture, fixtures & equipment
- **Flexibility** – Space configuration can easily be changed
- **Connection** – Wide corridors with clear way-finding tools
- **Complexity** – Diverse opportunities for alternative learning activities
- **Color** – Warm colors for more senior grades; cool, bright colors in junior grades

Barrett, Zhang, Moffat, Kobbacy – Building and Environment, January 2013



COMMUNITY ENGAGEMENT SESSION #2

QUESTION

“Keeping in mind what you’ve learned, what would you do to improve Springfield School District facilities?”

Small Group Work Activity Reporting

Don't miss session #3!

VISIONING: Planning Principles

Tuesday, March 28, 2017
6:00 p.m. – 7:30 p.m.
Southeast High School

Our Schools Our Future Website



<http://www.sps186.org/ourschoolsourfuture/>

Springfield Public Schools  **OUR SCHOOLS OUR FUTURE**

Thank You!

s u p p l e m e n t a l i n f o r m a t i o n

COMMUNITY ENGAGEMENT SESSION #3

supplemental information

Springfield Public Schools **OUR SCHOOLS OUR FUTURE**

VISIONING: Planning Principles

Community Engagement Session #3

BLDD ARCHITECTS

Springfield Public Schools **OUR SCHOOLS OUR FUTURE**

AGENDA

- Recap of CES #2
- Overview of the Visioning Process
- Planning Principles
 - What Are They?
 - Springfield Planning Principles for Effective Educational Environments
- Small Group Work/Report Out

Community Engagement Session #2

VISIONING: 21st Century Programs and Facilities

OUR SCHOOLS OUR FUTURE Facilities Master Plan Overview

WHERE WE ARE NOW → WHERE WE WANT TO GO

PHASE 1 JAN-MAY 2017	VISIONING: 21st Century Programs and Facilities	VISIONING: Planning Principles	VISIONING: Educational Standards	VISIONING: Prioritization	Final Vision Document
February 15, 22 & 23 Community Engagement Session #1	March 15 6:00-7:30pm Langlier High School Community Engagement Session #2	March 28 6:00-7:30pm Southwest High School Community Engagement Session #3	April 26 6:00-7:30pm Spartanfield High School Community Engagement Session #4	May 10 6:00-7:30pm Southwest High School Community Engagement Session #5	May 22 6:00-7:30pm Springfield High School Community Engagement Session #6

HOW WE GET THERE

PHASE 2 JUNE-DEC 2017	SOLUTIONS: Review & evaluate (4) master plan solutions	SOLUTIONS: Review & evaluate (2) master plan solutions	DECIDE: Options forum for master plan selection
August 23 Site and location to be determined Community Engagement Session #7	September 27 Site and location to be determined Community Engagement Session #8	November 1 Site and location to be determined Community Engagement Session #9	

Springfield Public Schools **OUR SCHOOLS OUR FUTURE** BLDD ARCHITECTS

Springfield Public Schools **OUR SCHOOLS OUR FUTURE**

Overview of the Visioning Process

Overview of the Visioning Process

Educational Planning Principles (CES #3)

- Reflect important concepts and values identified by the community regarding the preferred future of our learning environments
 - Establish a common understanding of the aspirations for our learning environments
 - Establish a framework for decision making, avoiding arbitrary decisions
- Drives the development of an "Educational Standard" for our learning environments

Overview of the Visioning Process

Educational Standard (CES #4)

- Defines learning environments to be included in district facilities
 - This is how the proposed work at each facility is generated
- Begins with a review of educational adequacy
- Identifies the gaps that exist
- Creates a detailed list of what is needed at each facility
- Shows how the work proposed to meet the Planning Principles will develop suitable learning environments



Educational Standard

Space	2 Section Standard			3 Section Standard			4 Section Standard		
	No.	Unit Area	Total Area	No.	Unit Area	Total Area	No.	Unit Area	Total Area
Pre-Kindergartn/EC	1	1000	1000	2	1000	1000	1	1000	1000
Toilet (pre-K)	65	65	65	65	65	65	65	65	65
Kindergarden Classroom	2	1220	2440	3	1220	3660	4	1220	4880
Toilet (K)	65	130	130	3	65	195	4	65	260
First Grade Classroom	2	990	1980	3	990	2970	4	990	3960
Toilet (1st)	0	0	0	0	0	0	0	0	0
Second Grade Classroom	2	990	1980	3	990	2970	4	990	3960
Toilet (2nd)	0	0	0	0	0	0	0	0	0
Third Grade Classroom	2	990	1980	3	990	2970	4	990	3960
Fourth Grade Classroom	2	990	1980	3	990	2970	4	990	3960
Fifth Grade Classroom	2	990	1980	3	990	2970	4	990	3960
Resource	1	350	350	1	475	475	2	475	950
AEA	2	75	150	2	75	150	2	75	150
RD/ Reading	2	75	150	2	75	150	2	75	150
Physical Education	1	5640	5640	1	6000	6000	1	6400	6400
PE Storage	1	270	270	1	300	300	1	350	350
PE Office	1	90	90	1	100	100	2	120	240
Music	1	1000	1000	1	1200	1200	1	1500	1500

Educational Standard

Space	2 Section Standard			3 Section Standard			4 Section Standard		
	No.	Unit Area	Total Area	No.	Unit Area	Total Area	No.	Unit Area	Total Area
Music Practice	0	185	0	0	185	0	0	185	0
Music Storage	1	125	125	1	125	125	1	125	125
Music Office	1	125	125	1	125	125	1	125	125
Kiln	1	75	75	1	75	75	1	75	75
Media Center	1	2200	2200	1	2800	2800	1	3400	3400
Library Office	1	300	300	1	300	300	1	300	300
Computer Lab	1	825	825	1	825	825	2	825	1650
Art	1	1150	1150	1	1250	1250	1	1500	1500
Art Storage	1	125	125	1	150	150	1	250	250
Enrichment (TAG/ ELP)	0	330	0	0	350	0	0	375	0
Break-out/Small Group Room	2	175	350	3	175	525	4	175	700
Large Group Room	1	350	350	1	350	350	2	350	700
Research	0	800	0	0	800	0	0	800	0
Collaboration	1	900	900	1	900	900	2	900	1800
Project Storage	1	100	100	2	100	200	3	100	300
Hands-on/PBL Space	1	600	600	1	600	600	1	600	600
Messy/Lab Space	1	600	600	1	600	600	2	600	1200
Faculty Office/Team Area (Coaches)	1	375	375	2	400	800	2	400	800

Final Educational Adequacy



Overview of the Visioning Process

Prioritization (CES #5)

- Creates the order of priority for implementation
 - Hierarchy of needs is established
 - District-wide scope of work is aligned to the different hierarchies
 - Different "Tiers" are assigned for proposed work at each facility

Final Vision (CES #6)

- Identifies aspirations for district's preferred learning environments
- The specific work identified for each building in the district
- The prioritization of work throughout the district and for each facility



What Are Planning Principles?

COMMUNITY ENGAGEMENT SESSION #3

supplemental information

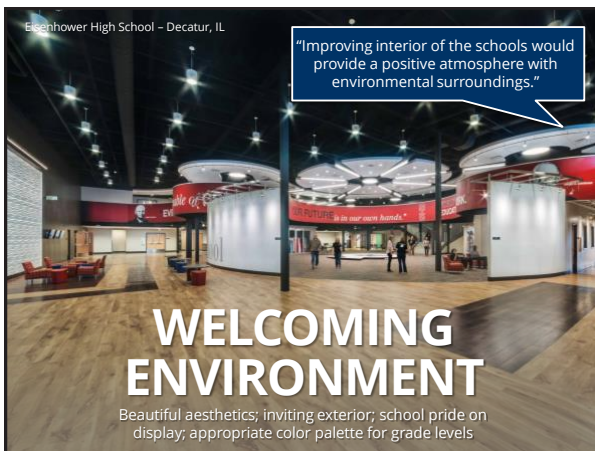
What Are Planning Principles?

Professional Development **Flexible** **Comfort**
 Fine Arts Curriculum Aesthetics Future-ready
Equitable Electrical **Collaborative**
 Hands-on Arts Learning Style Accommodation
Storage **Movement/Flow** Gym Exterior
 Neuro-diverse Features **Technology** Wellness
Community Use Welcoming/Inviting
Student-centered Variety Lighting
 Media Centers Science Labs Environment Multi-use Space
 Auditorium **Appropriate Space** Kitchen/Cafeteria
 Temperature Control **Health & Wellness** **Up-to-Date Infrastructure**
 Accessibility **Welcoming Environment** Athletics Flexible Furnishings
Outdoor Learning School Pride **Sustainable**

What Are Planning Principles?

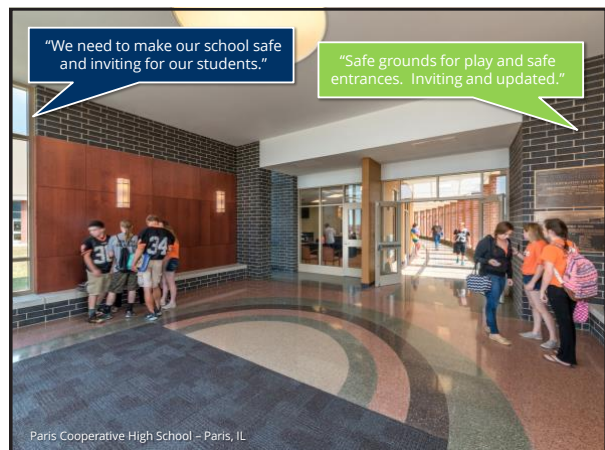
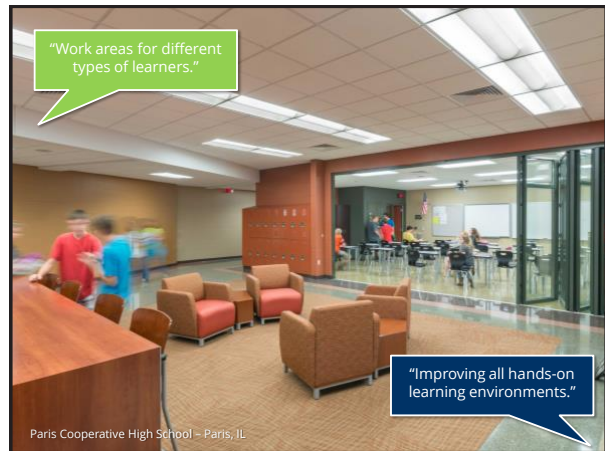
- Welcoming Environment**
 - Aesthetics
 - Environment
 - Exterior
 - School Pride
 - Welcoming/Inviting
- Up-to-Date Infrastructure**
 - Electrical
 - Lighting
 - Temperature Control
- Student-centered**
 - Future-ready
 - Hands-on
 - Learning Style Accommodation
 - Variety
- Technology**
- Safe & Secure**
- Flexible**
 - Flexible Furnishings
 - Multi-use Space
- Collaborative**
- Movement/Flow**

- Comfort**
- Community Use**
- Sustainable**
- Health & Wellness**
- Appropriate Space**
- Storage**
- Outdoor Learning**
- Equitable**
 - Arts
 - Athletics/Wellness
 - Auditorium
 - Fine Arts
 - Gym
 - Kitchen/Cafeteria
 - Media Centers
 - Science Labs
 - Accessibility
 - Neuro-diverse Features
 - Professional Development
 - Curriculum



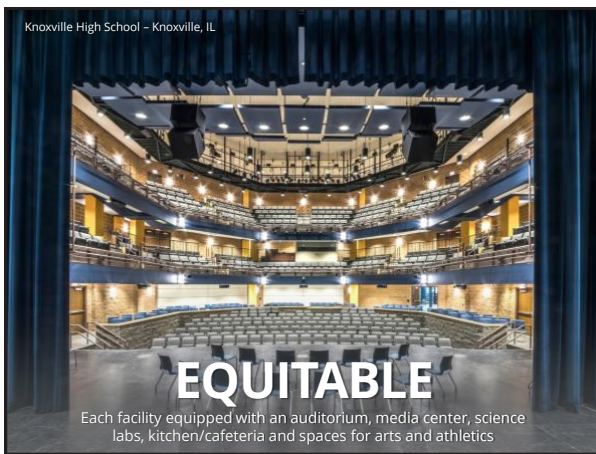
COMMUNITY ENGAGEMENT SESSION #3

supplemental information



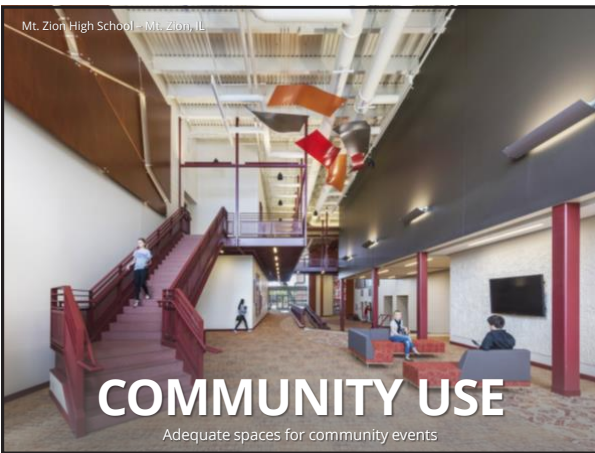
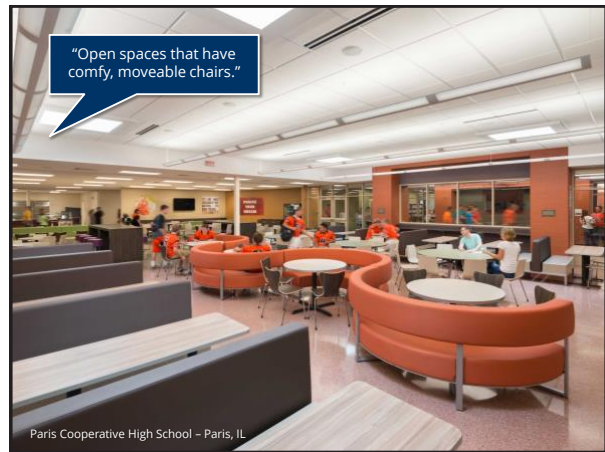
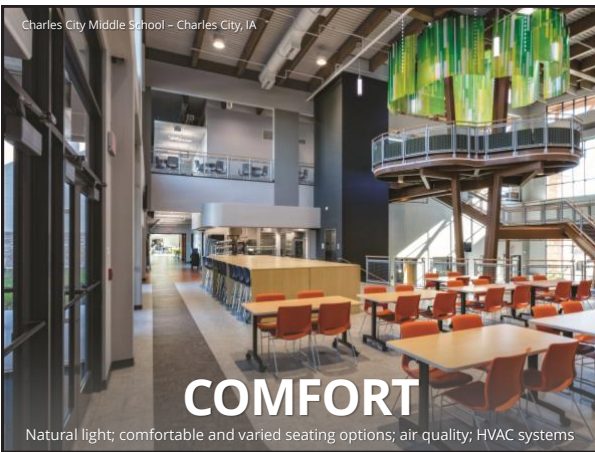
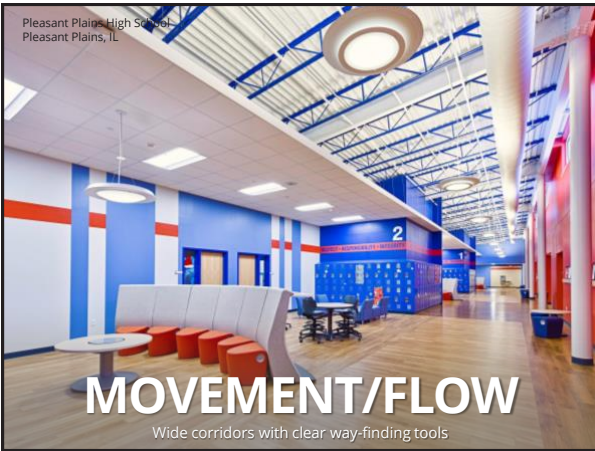
COMMUNITY ENGAGEMENT SESSION #3

supplemental information



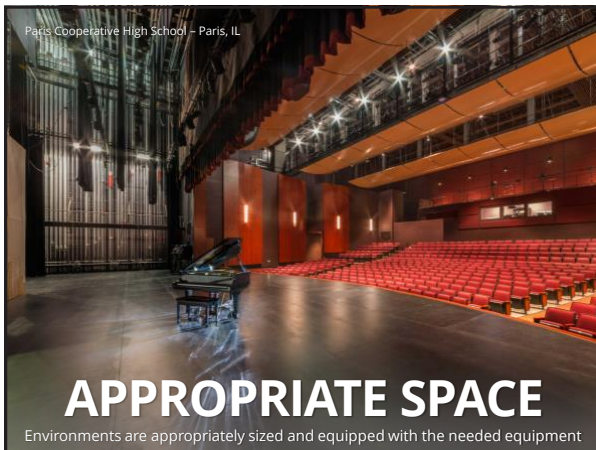
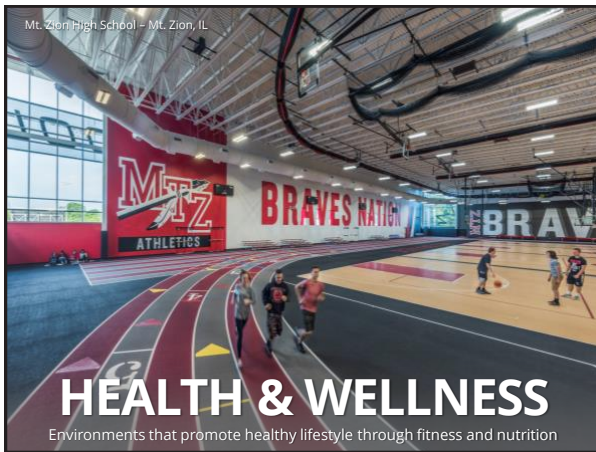
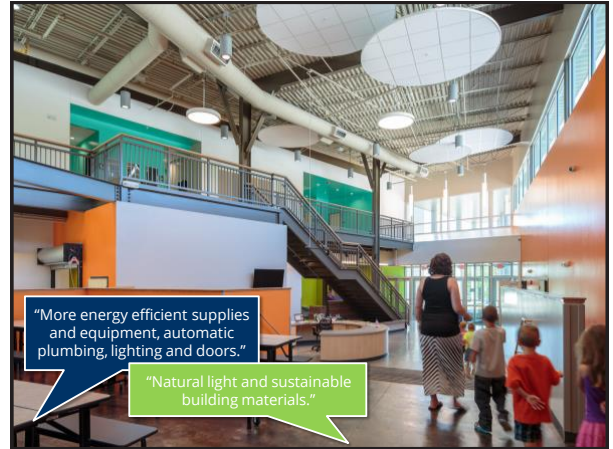
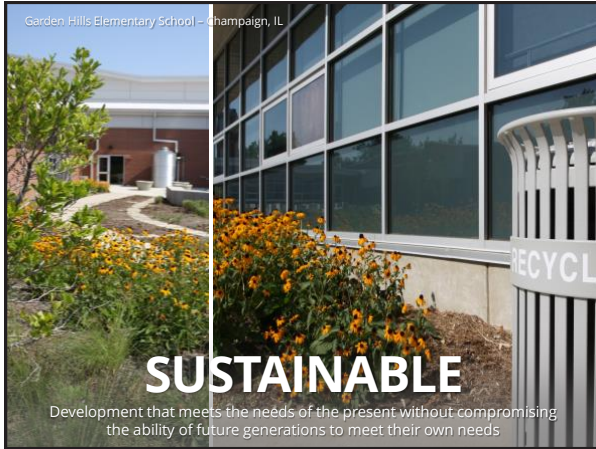
COMMUNITY ENGAGEMENT SESSION #3

Supplemental information



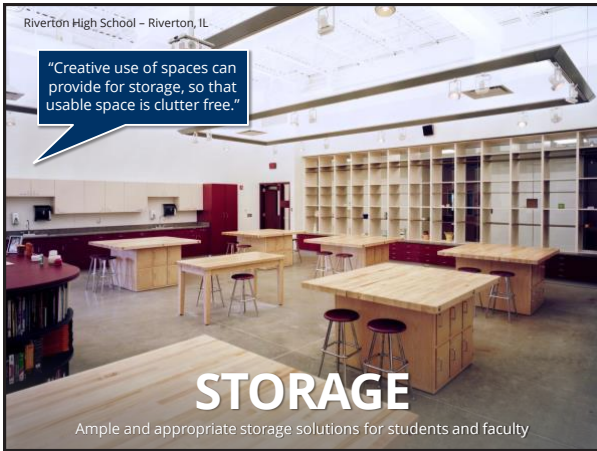
COMMUNITY ENGAGEMENT SESSION #3

supplemental information



COMMUNITY ENGAGEMENT SESSION #3

Supplemental information




Small Group Work Activity

Group Discussion
(15 minutes)

“What are the Planning Principles that should receive highest priority when developing an educational facilities plan?”

COMMUNITY ENGAGEMENT SESSION #3

supplemental information



"Shopping Spree"
(15 minutes)

Use your "Springfield Bucks" to vote for the Planning Principles you personally feel are most important to the process.

**Small Group
Work Activity
Reporting**

Don't miss session #4!

**VISIONING:
Educational Standards**

Wednesday, April 26, 2017
6:00 p.m. – 7:30 p.m.
Springfield High School

Our Schools Our Future Website



**OUR SCHOOLS
OUR FUTURE**

FACILITIES MASTER PLANNING PROCESS

Help Us Improve Our Schools

You're invited to give input on District 186 facilities to help us build a plan for our preferred future as we begin a facilities master planning process. Choose one of the first three opening "State of the District" community engagement sessions to attend, and then attend any and/or all subsequent sessions.

<http://www.sps186.org/ourschoolsourfuture/>



**OUR
SCHOOLS
OUR
FUTURE**

**Thank
You!**

COMMUNITY ENGAGEMENT SESSION #4

Springfield Public Schools **OUR SCHOOLS OUR FUTURE**

VISIONING: Educational Standards

Community Engagement Session #4

BLDD ARCHITECTS

AGENDA

- Recap of the work to date
- Planning Principles results
- Video
- ISS Benchmark
- Facility Functional Suitability
- Small Group Activity - "What is Missing?"

WORK TO DATE

- 1 CURRENT CONDITIONS**
State of the District
- 2 VISIONING**
21st Century Programs and Facilities
- 3 VISIONING**
Planning Principles

Facilities Master Plan Overview

WHERE WE ARE NOW (JAN-MAY 2017)

VISIONING: State of the District	VISIONING: 21st Century Programs and Facilities	VISIONING: Planning Principles	VISIONING: Educational Standards	VISIONING: Prioritization	Final Vision Document
February 15, 22 & 23	March 15 (6:00-7:30pm) Langflier High School	March 28 (6:00-7:30pm) Southwood High School	April 26 (6:00-7:30pm) Springfield High School	May 10 (6:00-7:30pm) Southwood High School	May 22 (6:00-7:30pm) Springfield High School
Community Engagement Session #1	Community Engagement Session #2	Community Engagement Session #3	Community Engagement Session #4	Community Engagement Session #5	Community Engagement Session #6

HOW WE GET THERE (JUNE-DEC 2017)

SOLUTIONS: Review & evaluate (4) master plan solutions	SOLUTIONS: Review & evaluate (2) master plan solutions	DECIDE: Options forum for master plan selection
August 23 (6:00-7:30pm) Springfield High School	September 27 (6:00-7:30pm) Springfield High School	November 1 (6:00-7:30pm) Springfield High School
Community Engagement Session #7	Community Engagement Session #8	Community Engagement Session #9

www.sps186.org/ourschoolsourfuture
Twitter: @schooldist186
Facebook.com/District186

Springfield Public Schools **BLDD ARCHITECTS**

Planning Principles Voting

• Equitable	680
• Student - Centered	525
• Safety/Security	490
• Technology	420
• Infrastructure	340
• Welcoming Environment	310
• Appropriate/Adequate Space	275
• Health/Wellness	200
• Flexible	140
• Sustainability	125
• Movement/Flow	120
• Collaboration	95
• Comfort	90
• Community Use	50
• Outdoor Learning	45
• Storage	35

Planning Principles Results

EQUITABLE: Each facility equipped with an auditorium, media center, science labs, kitchen/cafeteria and spaces for arts and athletics

STUDENT CENTERED: Students are active participants in the learning process; purposeful furniture, fixtures & equipment; ability to access technology

SAFE & SECURE: Transparent environment; easily observed; controlled access; a feeling of home

UP-TO-DATE INFRASTRUCTURE: High quality and sufficient quantity of electrical lighting; equipped with adequate outlets for various technology; ability to connect to global community of learners

WELCOMING ENVIRONMENT: Beautiful aesthetics; inviting exterior; school pride on display; appropriate color palette for grade levels

COMMUNITY ENGAGEMENT SESSION #4

Linguistics, Learning,
and the Language of
the Design Response

"What do these terms
mean to you?"

Using your phone,
navigate to
Slido.com.

Next, type in event
code: 7980

"What do these terms
mean to you?"

- 1) 🧑 🚗 🚫 🤔 ➡️ 🏢 ➡️ 🏠
- 2) ? 🕒 🏢 ? ➡️ 🍪
- 3) 🆕 📀 ➡️ 🧠 🔥 🎯
- 4) 👤 💥 🤖 📱 ⬆️ 💰

ISS Benchmark

- What is ISS?
- Recap of the Educational Workshop
- Results: list of needs at the Elementary, Middle and High School levels



Elementary Space Needs

- | | | |
|--|---|--|
| <p>Whole School</p> <ul style="list-style-type: none"> • Dedicated cafeteria with efficient kitchen • Sound system for announcements • Regulation gym/field house with seating • Auditorium/stage with seating • Outdoor learning space • Playground (flexible, accessible) & field • Dedicated fine arts spaces • Health Services space • After School Programs - office/storage space | <ul style="list-style-type: none"> • Community Room • Grade level common areas with media • Conference rooms in varying sizes • Media/Library space • Private small group space - SSS, intervention • Storage • Work area for teachers - separate from main office • Faculty area with adult bathrooms • Well placed bathroom facilities (accessible, age appropriate) | <ul style="list-style-type: none"> • Office space by front door • File room <p><u>Classroom</u></p> <ul style="list-style-type: none"> • Carpet area • Flexible seating • Small group nooks • Sink/water fountain • Storage • Personal area (coats, bags) • Media area • Work area with table top • Collaborative space - teachers & students |
|--|---|--|

Middle School Space Needs

- | | | |
|---|--|---|
| <ul style="list-style-type: none"> • Grade level commons • Auditorium with stage • Cafeteria • Teacher offices • Office space • Meeting rooms • in varying sizes • Band room • Choir room • Fitness room/building • Two gymnasiums • Locker rooms • Coaches offices • Bathroom/shower facilities | <ul style="list-style-type: none"> • Science labs • Media labs • Multiple sized classrooms • Tech labs • Production room (studio) • Kitchen (not cafeteria) • Laundry • Outdoor space - activity, sports, eating, exercise, gardening spaces • Chill space • Storm shelter • Interior corridors • Community resource center | <ul style="list-style-type: none"> • Lab storage • Device storage • Health center • PD resource/meeting space • Distributed meeting rooms • Classrooms • Concession stand • School store • Lobby/welcoming area • Waiting area • Alternative learning space |
|---|--|---|

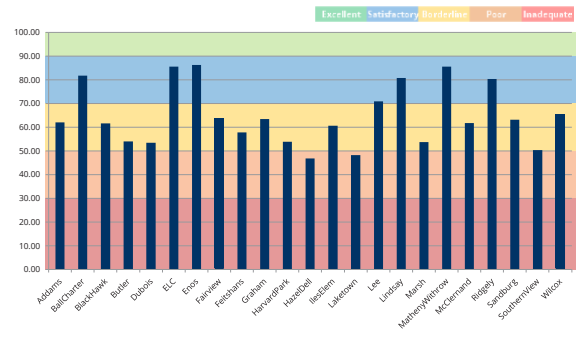
COMMUNITY ENGAGEMENT SESSION #4

Supplemental information

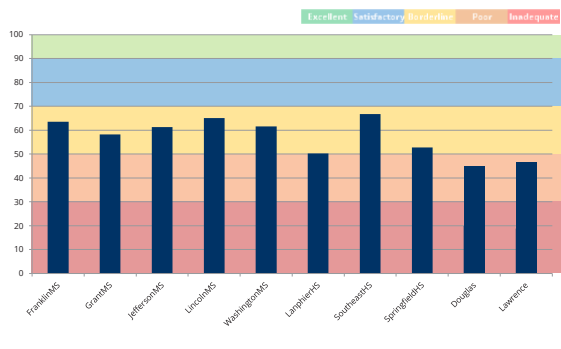
High School Space Needs

- Performing arts space**
 - Culinary
 - Multi-media art (production)
 - Fine arts support
 - Administrative
 - Studio/Production
 - Storage
 - Real-world locations
 - Outdoor learning
 - Food production/distribution
 - Maintenance
 - Assembly space
 - Wellness
 - Pavilion
 - Auditorium - large
 - Community
 - Professional learning spaces
 - Discipline Office / ISS
 - Publishing
 - Counseling
 - Classrooms
 - Health care (community also)
 - Competition (indoor/outdoor)
 - Office/meeting room
- Curriculum specific labs**
 - Life skills in classrooms
 - P/T space
 - Athletic support
 - Performance support
- Practice space – athletic, performance, academic**
 - Large group instruction
 - Small group instruction
 - Labs
 - Conference
 - Commons
 - Small open gathering
 - Large open gathering
 - Personal facilities
 - Locker room
 - Changing room
 - Emergency shelter
- Smart circulation space**
 - Queuing space

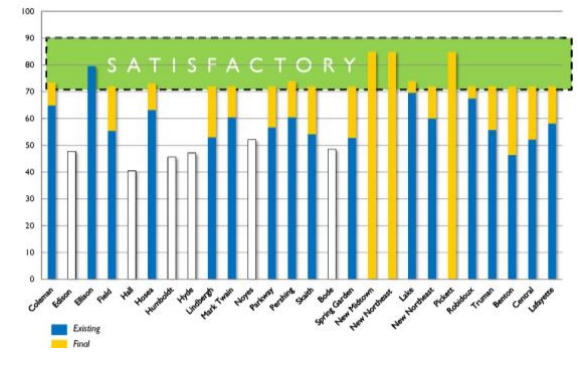
Facility Functional Suitability - Elementary Schools



Facility Functional Suitability - Middle & High Schools



Final Educational Adequacy



Small Group Work Activity



What's Missing? (30 minutes)

Identify and record what's missing in your building when compared to the Facility Functional Suitability

COMMUNITY ENGAGEMENT SESSION #4

supplemental information



"Gallery Walk"

(15 minutes)

Review the results from each group. Compare with the findings from your facility. Use Post-it notes to make suggestions for other facilities.



Report Out

(10 minutes)

Identify the top 3 items from your group's list of what's missing (the "gaps").



Report Out

(10 minutes)

To report out, go to Slido.com again. Enter event code: 5533. Type the name of your facility and the top 3 "gaps".

Don't miss session #5!

VISIONING: Prioritization

Wednesday, May 10, 2017
6:00 p.m. – 7:30 p.m.
Southeast High School

Our Schools Our Future Website



<http://www.sps186.org/ourschoolsourfuture/>

Springfield
Public Schools  **OUR
SCHOOLS
OUR
FUTURE**

Thank You!

COMMUNITY ENGAGEMENT SESSION #5

Springfield Public Schools **OUR SCHOOLS OUR FUTURE**

VISIONING: Prioritization

Community Engagement Session #5

AGENDA

- Recap of the work to date
- Community Engagement Session #4 recap
- Prioritization
- Small Group Activity

WORK TO DATE

- 1 CURRENT CONDITIONS**
State of the District
- 2 VISIONING**
21st Century Programs and Facilities
- 3 VISIONING**
Planning Principles
- 4 VISIONING**
Educational Standards

Facilities Master Plan Overview

PHASE 1 | JAN-MAY 2017

WHERE WE ARE NOW	WHERE WE WANT TO GO
CURRENT CONDITIONS: State of the District February 15, 22 & 23 Community Engagement Session #1	VISIONING: 21st Century Programs and Facilities March 15 6:00-7:30pm Langflier High School Community Engagement Session #2
VISIONING: Planning Principles March 28 6:00-7:30pm Southwest High School Community Engagement Session #3	VISIONING: Educational Standards April 26 6:00-7:30pm Springfield High School Community Engagement Session #4
VISIONING: Prioritization May 10 6:00-7:30pm Southwest High School Community Engagement Session #5	Final Vision Document May 22 6:00-7:30pm Springfield High School Community Engagement Session #6

PHASE 2 | JUNE-DEC 2017

HOW WE GET THERE
SOLUTIONS: Review & evaluate (4) master plan solutions August 23 6:00-7:30pm Langflier High School Community Engagement Session #7
SOLUTIONS: Review & evaluate (2) master plan solutions September 27 6:00-7:30pm Langflier High School Community Engagement Session #8
DECIDE: Options forum for master plan selection November 1 6:00-7:30pm Langflier High School Community Engagement Session #9

www.sps186.org/ourschoolsourfuture
Twitter: @schooldist186
Facebook.com/District186

Community Engagement Session #4

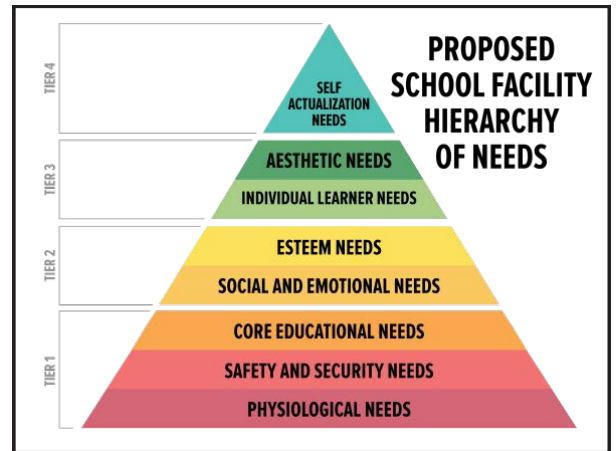
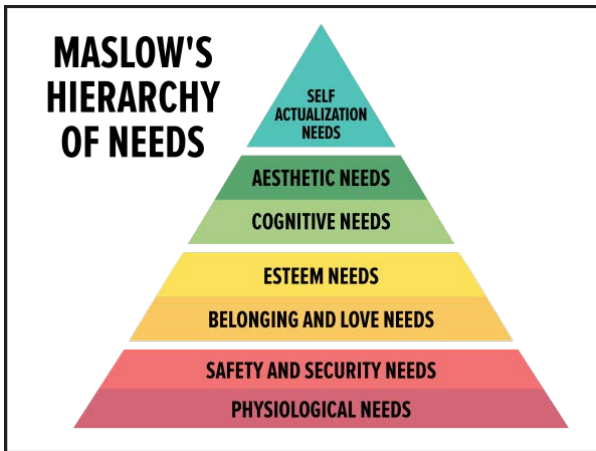
VISIONING: Educational Standards


MASLOW'S HIERARCHY OF NEEDS

- SELF ACTUALIZATION NEEDS
- ESTEEM NEEDS
- BELONGING AND LOVE NEEDS
- SAFETY AND SECURITY NEEDS
- PHYSIOLOGICAL NEEDS

COMMUNITY ENGAGEMENT SESSION #5

supplemental information





Using your phone, navigate to [Slido.com](https://www.slido.com).

Next, type in event code: 7980

TIER 1

- CORE EDUCATIONAL NEEDS
- SAFETY AND SECURITY NEEDS
- PHYSIOLOGICAL NEEDS

Text one or more examples of educational spaces that fall into Tier 1

TIER 2

- ESTEEM NEEDS
- SOCIAL AND EMOTIONAL NEEDS

Text one or more examples of educational spaces that fall into Tier 2

TIER 3


- AESTHETIC NEEDS
- INDIVIDUAL LEARNER NEEDS

Text one or more examples of educational spaces that fall into Tier 3

COMMUNITY ENGAGEMENT SESSION #5

supplemental information

TIER 4



Text one or more examples of educational spaces that fall into Tier 4

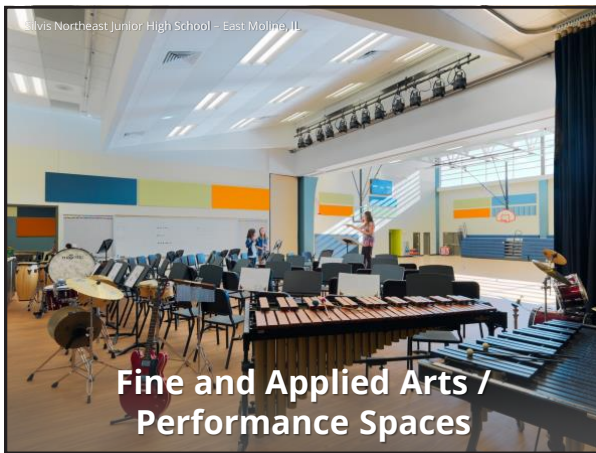
SPACES FOR PRIORITIZATION

- Core Educational Environments (classrooms)
- Student Collaboration Spaces
- Learning Labs (science, technology, maker space)
- Career and Technical Preparation Labs (culinary, business, engineering)
- Fine and Applied Arts / Performance Spaces
- Media Center / Library Services / Distance Learning Labs
- Physical Education / Athletic Facilities (inside and outside, support spaces for coaches/teams)
- Spaces for students with special needs (classrooms, small learning areas)
- 21st Century / Personalized Learning (flexible learning spaces, small group, whole group)
- Administrative Spaces (offices, conference rooms)
- Faculty Support / Work Spaces
- Health Services
- Dining and Food Service
- Community Spaces
- Building Services / Facilities Management Spaces
- Reception / Lobby / Welcoming Space



COMMUNITY ENGAGEMENT SESSION #5

supplemental information



COMMUNITY ENGAGEMENT SESSION #5

supplemental information



COMMUNITY ENGAGEMENT SESSION #5

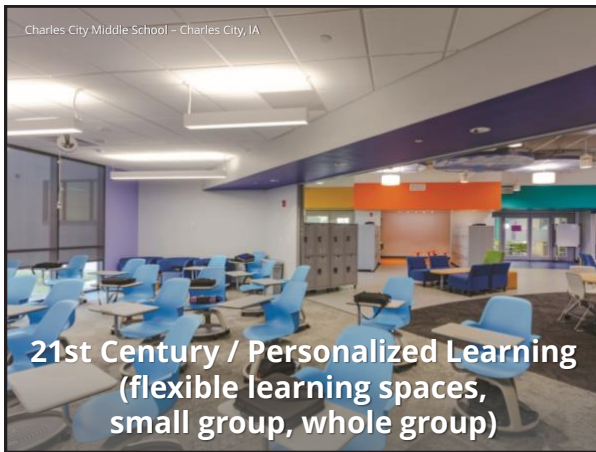
supplemental information



Spaces for students with special needs (classrooms, small learning areas)



Spaces for students with special needs (classrooms, small learning areas)



21st Century / Personalized Learning (flexible learning spaces, small group, whole group)



21st Century / Personalized Learning (flexible learning spaces, small group, whole group)



Administrative Spaces (offices, conference rooms)



Administrative Spaces (offices, conference rooms)

COMMUNITY ENGAGEMENT SESSION #5

supplemental information



Giant Tower, Northern Illinois University - DeKalb, IL

**Administrative Spaces
(offices, conference rooms)**



Charles City Middle School - Charles City, IA

Faculty Support / Work Spaces



Eisenhower High School - Decatur, IL

Faculty Support / Work Spaces



Carden Park Elementary School - St. Joseph, MO

Health Services



Eisenhower High School - Decatur, IL

Dining and Food Services

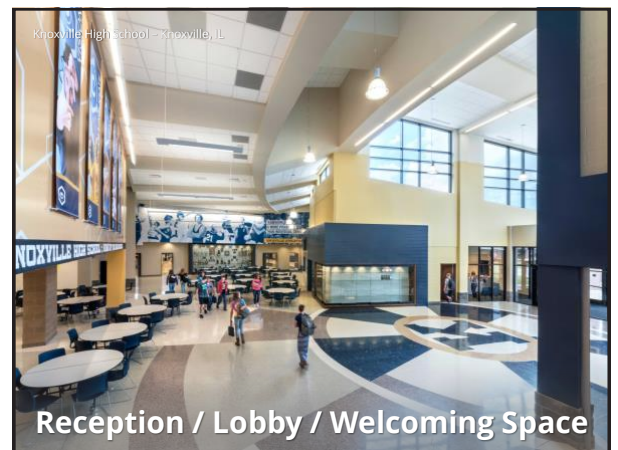
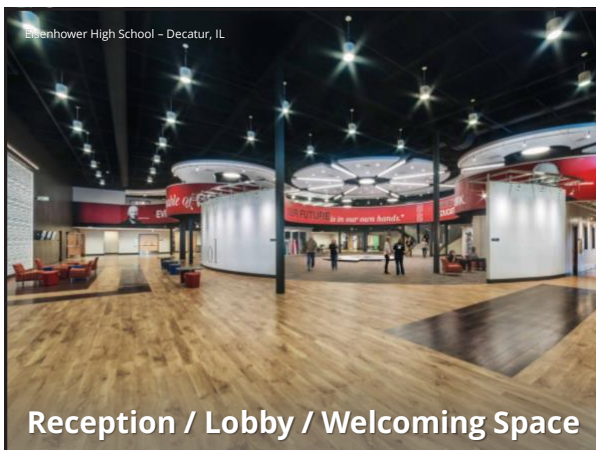
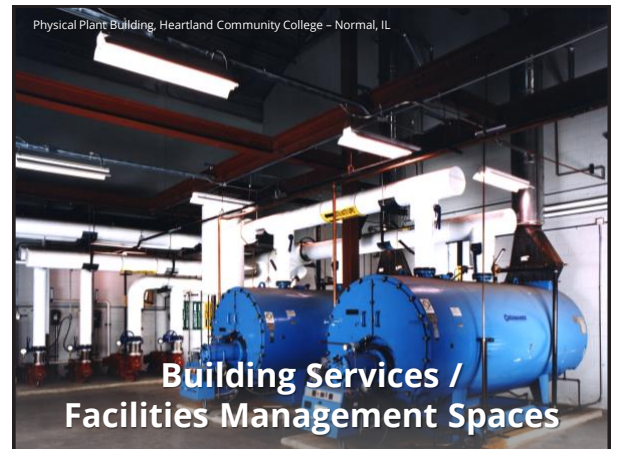
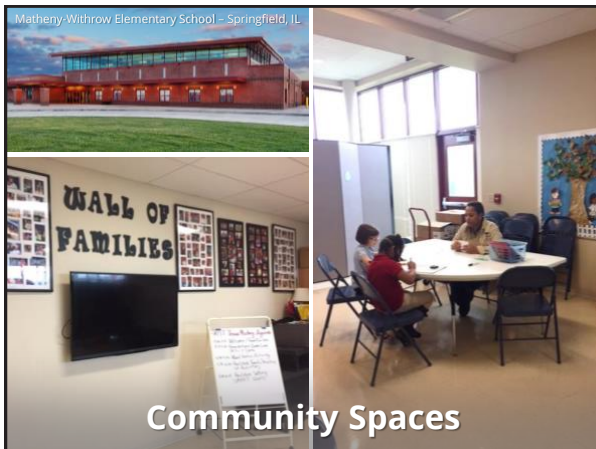


Paris High School - Paris, IL

Dining and Food Services

COMMUNITY ENGAGEMENT SESSION #5

supplemental information

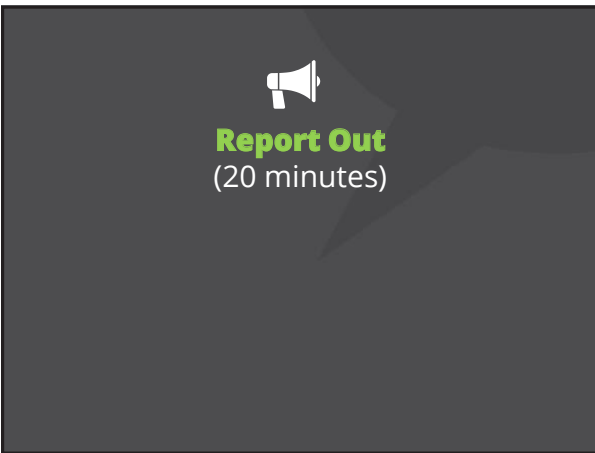


COMMUNITY ENGAGEMENT SESSION #5

supplemental information



	TIER 1	TIER 2	TIER 3	TIER 4
Core Educational Environments (classrooms)				
Student Collaboration Spaces				
Learning Labs (science, technology, maker space)				
Career and Tech Prep Labs (culinary, business, engineering)				
Fine and Applied Arts / Performance Spaces				
Media Center / Library Services / Distance Learning Labs				
Physical Education / Athletic Facilities (inside and outside, support spaces for coaches/teams)				
Spaces for students with special needs (classrooms, small learning areas)				
21st Century / Personalized Learning (flexible learning spaces, small group, whole group)				
Administrative Spaces (offices, conference rooms)				
Faculty Support / Work Spaces				
Health Services				
Dining and Food Service				
Community Spaces				
Building Services / Facilities Management Spaces				
Reception / Lobby / Welcoming Space				





ELEMENTARY SCHOOLS

- 1 Addams**
10 Babiak Ln., 62702
217/525-3192
- 2 Ball Charter School**
2530 Ash St., 62707
217/525-3275
- 3 Black Hawk**
2500 South College St., 62704
217/525-3195
- 4 Butler**
1701 S. Macarthur Blvd., 62704
217/525-3201
- 5 Dubois**
120 South Lincoln Ave., 62704
217/525-3204
- 6 Early Learning Center**
2501 South 1st St., 62704
217/525-3163
- 7 Enos**
524 West Elliott Ave., 62702
217/525-3208
- 8 Fairview**
2200 Ridgely Ave., 62702
217/525-3211
- 9 Feitshans Academy**
1101 South 15th, 62703
217/525-3030

- 10 Graham**
900 West Edwards St., 62704
217/525-3220
- 11 Harvard Park**
2501 South 11th St., 62703
217/525-3214
- 12 Hazel Dell**
850 West Lake Shore Dr., 62707
217/525-3223
- 13 Iles**
1700 South 15th St., 62703
217/525-3226
- 14 Laketown**
1825 Lee St., 62703
217/525-3230
- 15 Lee**
1201 Bunn Ave., 62703
217/525-3154
- 16 Lindsay**
3600 Fielding Dr., 62707
217/747-5770
- 17 Marsh**
1100 Avon Dr., 62704
217/525-3242
- 18 Matheny-Withrow**
1200 Pope Ave., 62703
217/525-3245

- 19 McClernand**
801 North Sixth St., 62702
217/525-3247
- 20 Ridgely**
2040 North Eighth St., 62702
217/525-3259
- 21 Sandburg**
2051 Wabash, 62704
217/525-3264
- 22 Southern View**
3338 South Fifth St., 62703
217/525-3267
- 23 Wilcox**
2000 Hastings Rd., 62702
217/525-3281
- MIDDLE SCHOOLS**
- 24 Franklin Middle School**
1200 Outer Park Dr., 62704
217/525-3164
- 25 Grant Middle School**
1800 West Monroe St., 62704
217/525-3170
- 26 Jefferson Middle School**
3001 Allis St., 62703
217/525-3176
- 27 Lincoln Magnet School**
300 South 11th St., 62703
217/525-3236

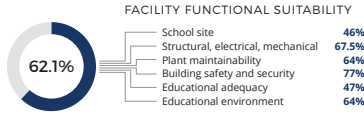
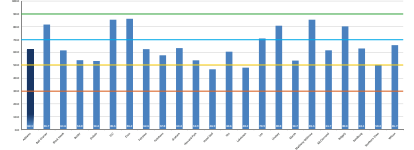
- 28 Washington Middle School**
2300 East Jackson St., 62703
217/525-3182
- HIGH SCHOOLS**
- 29 Lanphier High School**
1300 North 11th St., 62702
217/525-3080
- 30 Southeast High School**
2350 East Ash St., 62703
217/525-3130
- 31 Springfield High School**
101 South Lewis St., 62704
217/525-3100
- ALT/OPTIONAL/ADULT**
- 32 Douglas Alt Programs**
444 West Reynolds St., 62702
217/525-4400
- 33 Lawrence**
101 East Laurel, 62704
217/525-3144
- 34 Springfield Learning Academy**
101 East Laurel, 62704
217/525-3358

PROPOSED PHYSICAL NEEDS ASSESSMENT PROJECTS

Sum of Cost	
School	Total
Addams	\$ 421,500
Ball Charter	\$ 410,000
Blackhawk	\$ 1,685,000
Butler	\$ 1,358,000
Douglas	\$ 518,000
Dubois	\$ 1,989,000
ELC	\$ 287,000
Enos	\$ 35,000
Fairview	\$ 1,785,000
Feitshans	\$ 750,000
Franklin (FMS)	\$ 8,244,200
Graham	\$ 770,500
Grant (GMS)	\$ 8,437,500
Harvard Park	\$ 166,100
Hazel Dell	\$ 4,490,400
Iles	\$ 457,000
Jefferson (JMS)	\$ 6,331,800

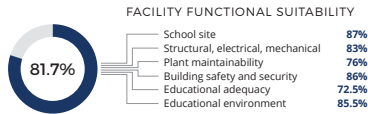
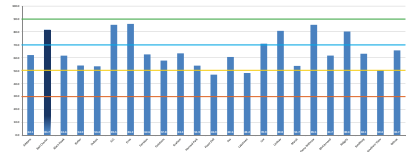
Sum of Cost	
School	Total
Laketown	\$ 4,117,400
Lanphier High	\$ 19,786,500
Lawrence	\$ 475,000
Lee	\$ 60,000
Lincoln	\$ 5,280,000
Lindsay	\$ 1,314,200
Marsh	\$ 2,944,600
Matheny-Withrow	\$ 30,000
McClernand	\$ 50,000
Ridgely	\$ 50,000
Sandburg	\$ 2,460,000
Southeast High	\$ 9,062,500
Southern View	\$ 477,500
Springfield High	\$ 5,538,000
Washington (WMS)	\$ 8,750,000
Wilcox	\$ 30,000
Grand Total	\$ 98,561,700

ADDAMS

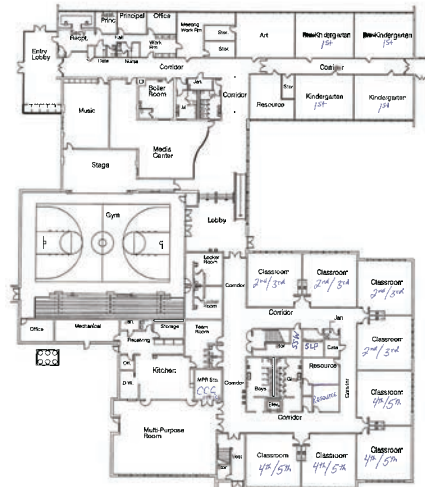


Floor Plan
Scale 1/32" = 1'-0"

BALL CHARTER SCHOOL



Second Floor Plan
Scale 1/32" = 1'-0"



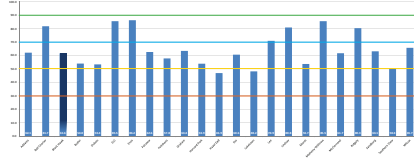
First Floor Plan
Scale 1/32" = 1'-0"

BLACK HAWK

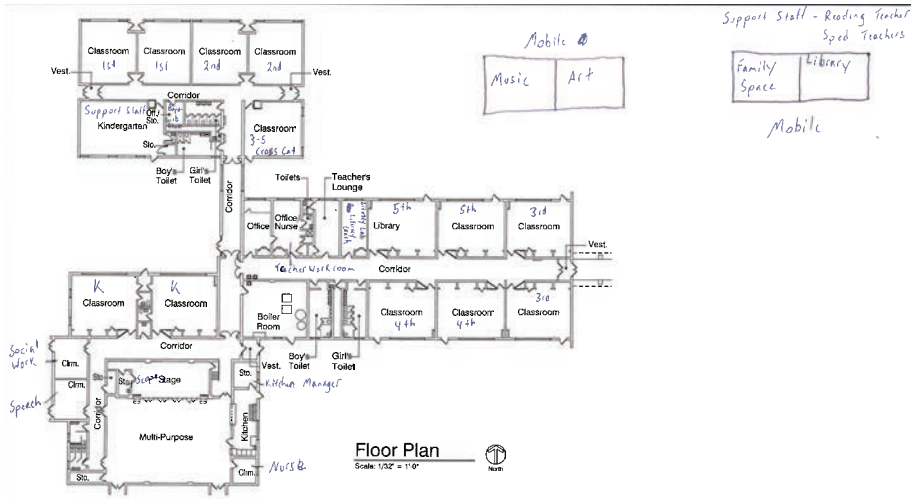
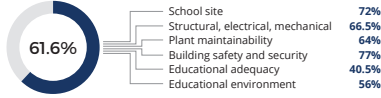
GRADE LEVELS



ENROLLMENT



FACILITY FUNCTIONAL SUITABILITY

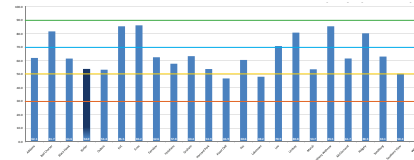
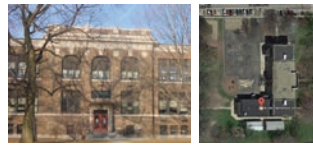


BUTLER

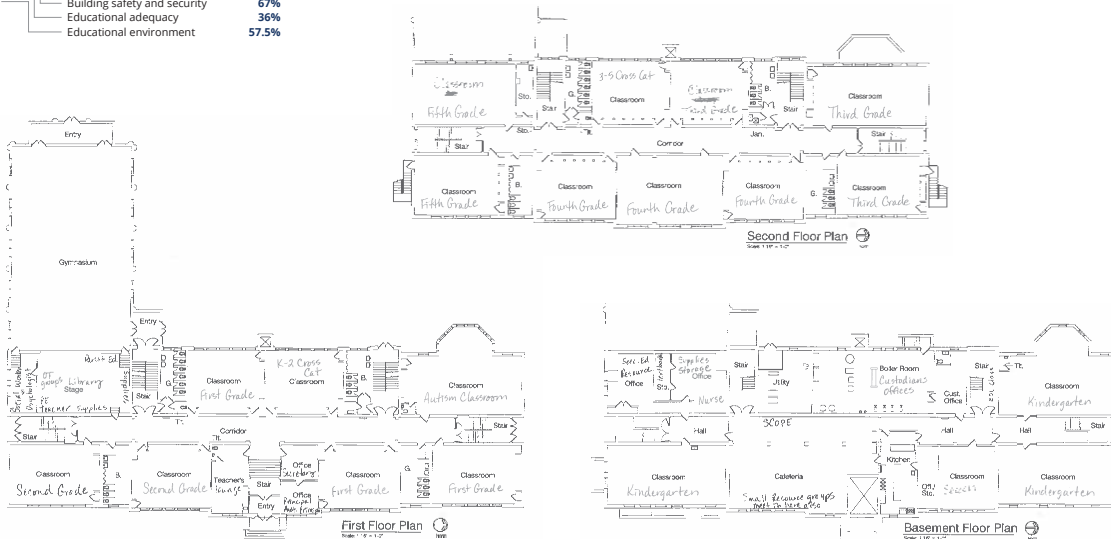
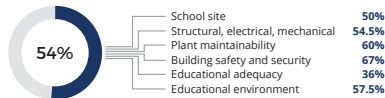
GRADE LEVELS



ENROLLMENT

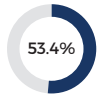
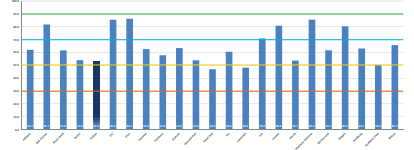


FACILITY FUNCTIONAL SUITABILITY



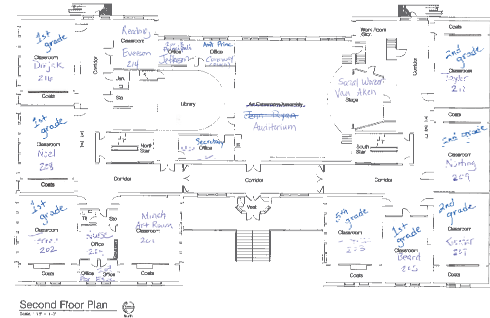
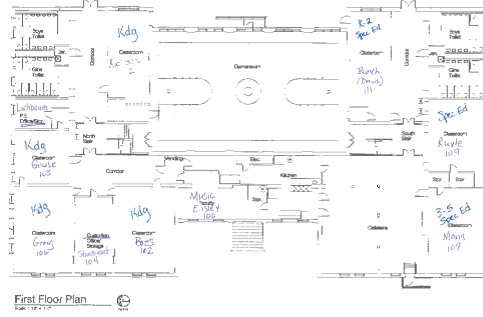
supplemental information

DUBOIS

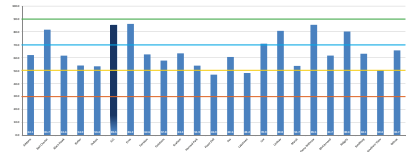


FACILITY FUNCTIONAL SUITABILITY

School site	47%
Structural, electrical, mechanical	56.5%
Plant maintainability	54%
Building safety and security	66%
Educational adequacy	38%
Educational environment	56%

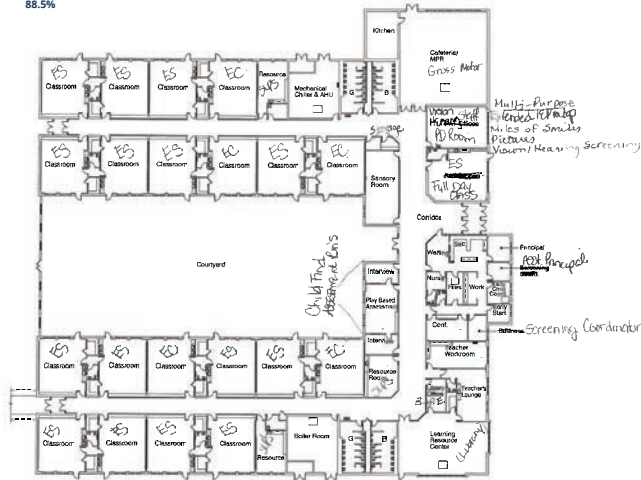


EARLY LEARNING CENTER



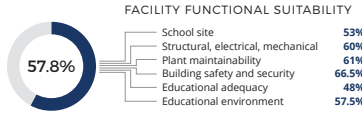
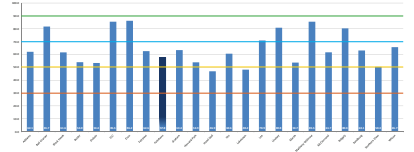
FACILITY FUNCTIONAL SUITABILITY

School site	81%
Structural, electrical, mechanical	88%
Plant maintainability	87%
Building safety and security	92.5%
Educational adequacy	74.5%
Educational environment	88.5%

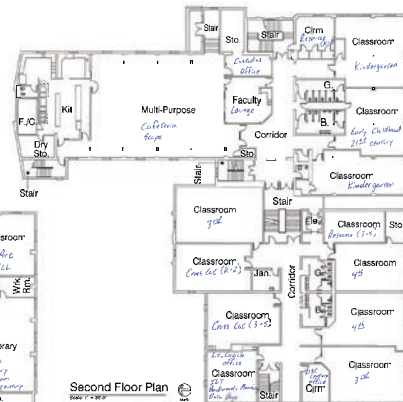
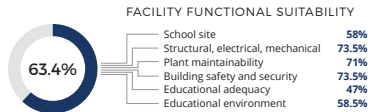
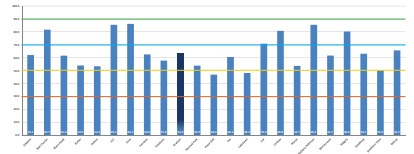


Floor Plan
Scale 1/8" = 1'-0"

FEITSHANS



GRAHAM

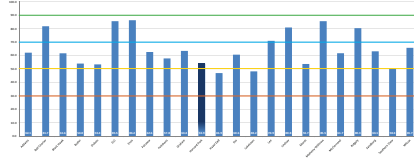


HARVARD PARK

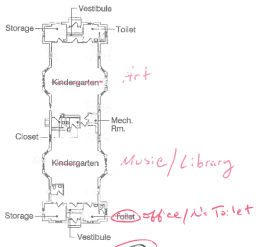
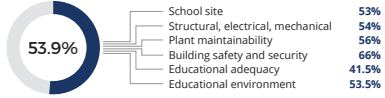
GRADE LEVELS



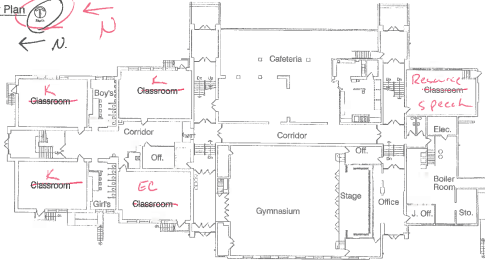
ENROLLMENT



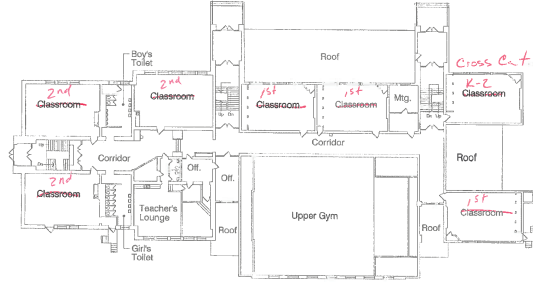
FACILITY FUNCTIONAL SUITABILITY



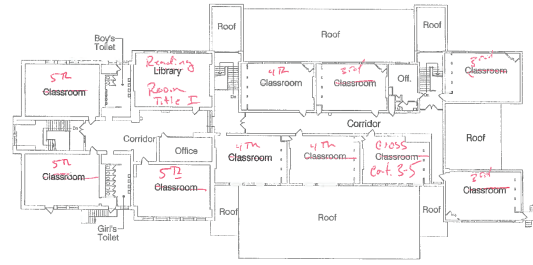
Annex - Floor Plan



Basement / First Floor Plan



First Floor Plan



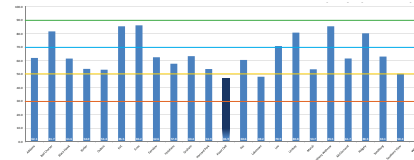
Second Floor Plan

HAZEL DELL

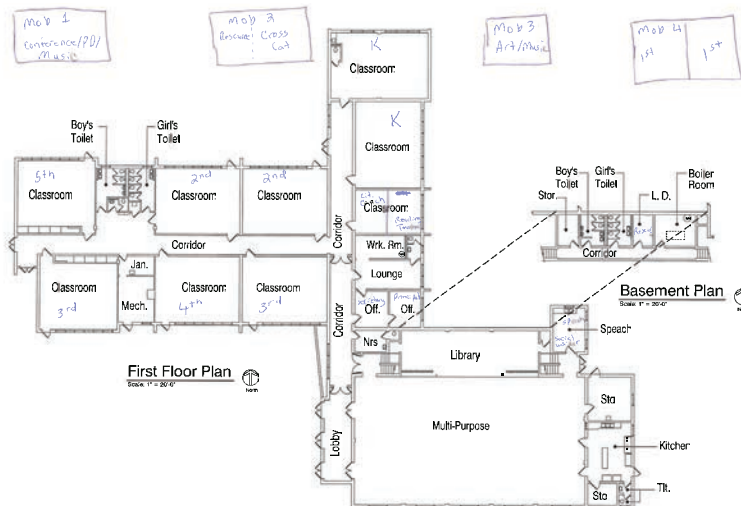
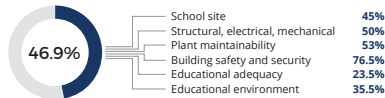
GRADE LEVELS



ENROLLMENT



FACILITY FUNCTIONAL SUITABILITY

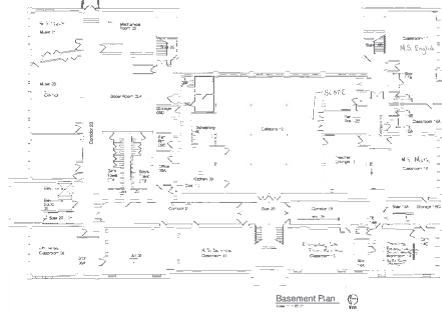
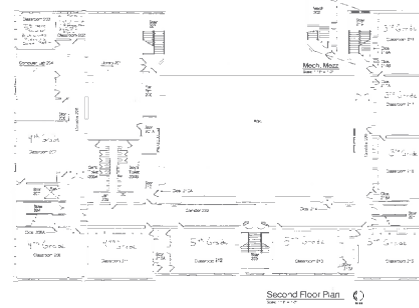
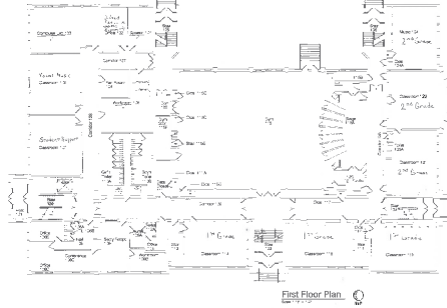
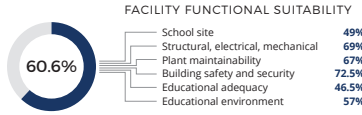
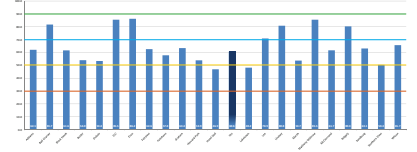


First Floor Plan

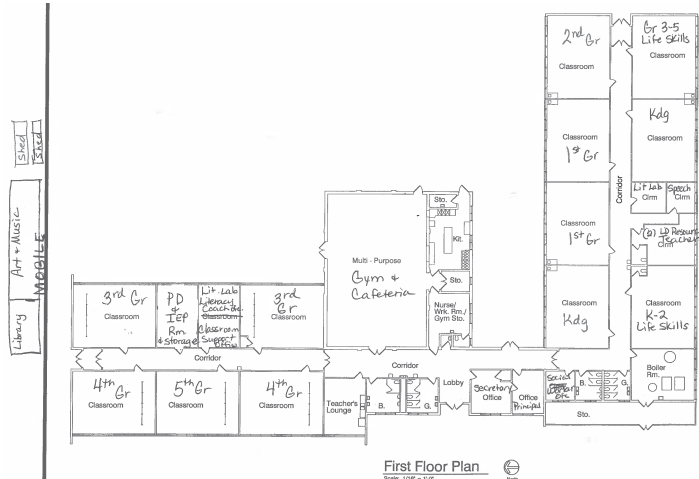
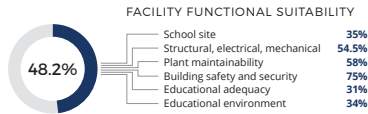
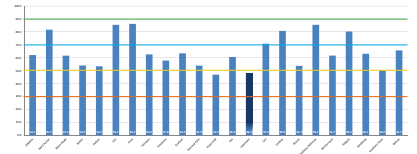
Basement Plan

Supplemental information

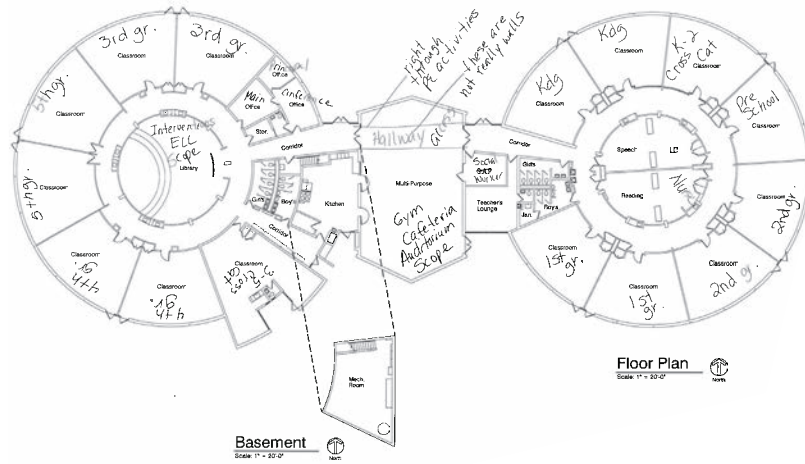
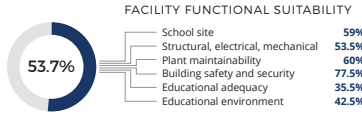
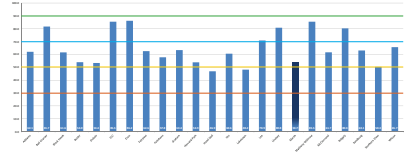
ILES SCHOOL



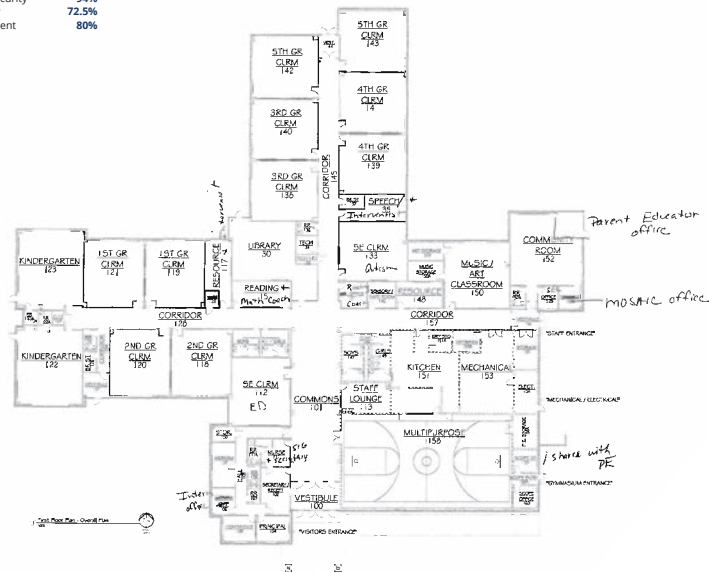
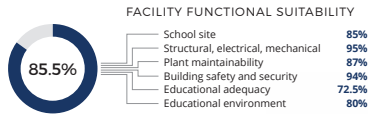
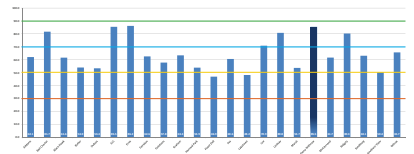
LAKETOWN



MARSH



MATHENY-WITHROW

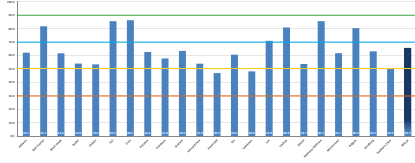


WILCOX

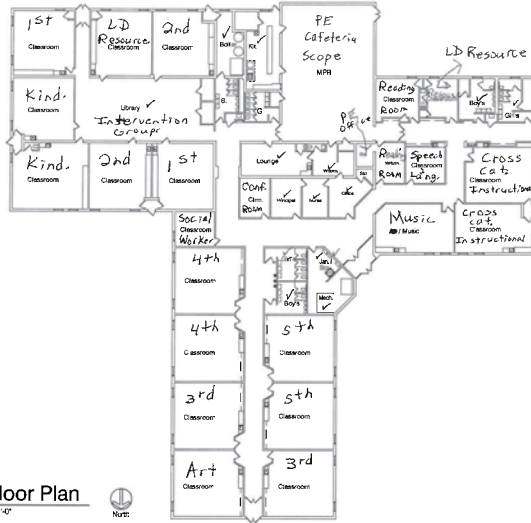
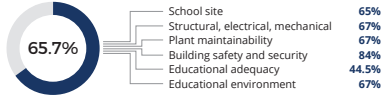
GRADE LEVELS



ENROLLMENT



FACILITY FUNCTIONAL SUITABILITY

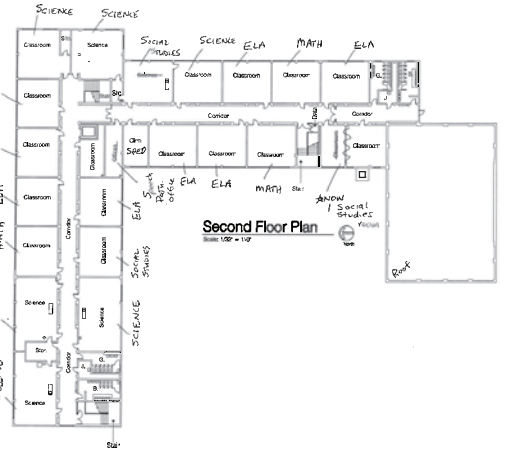
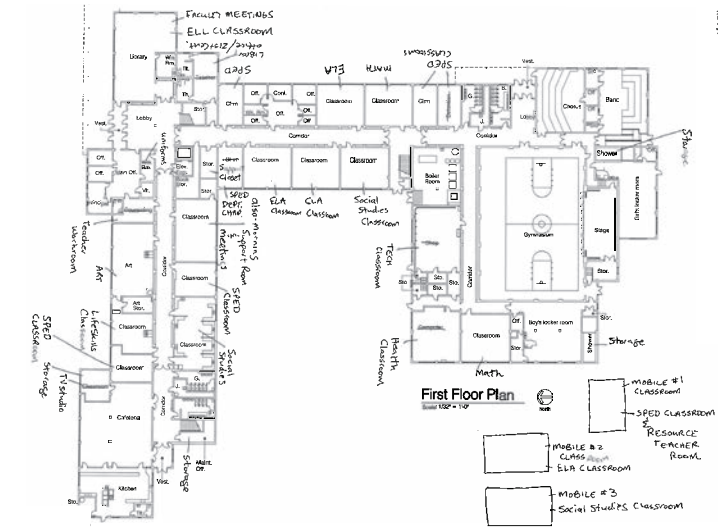
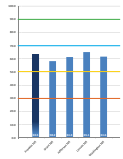


Supplemental information

FRANKLIN MIDDLE SCHOOL

GRADE LEVELS
 P K 1 2 3 4 5
 6 7 8 9 10 11 12

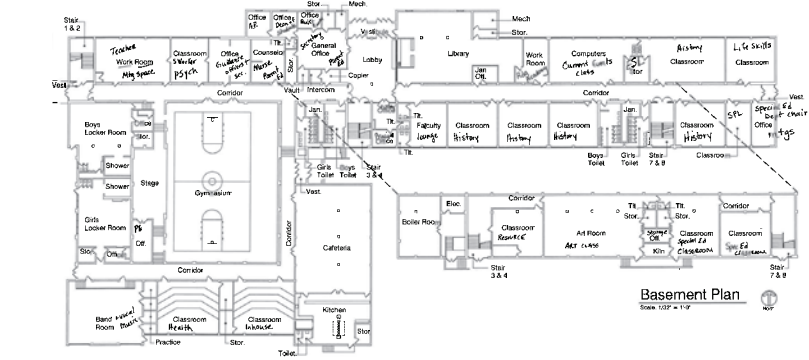
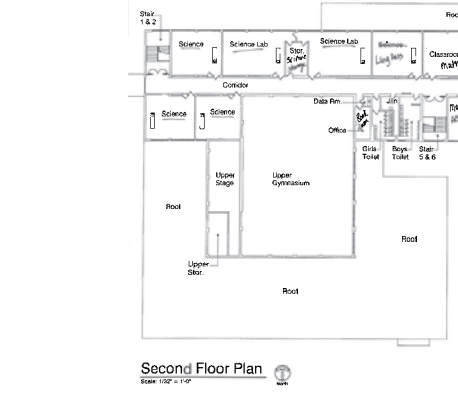
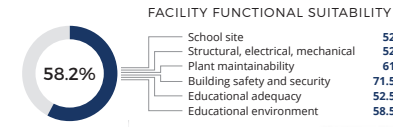
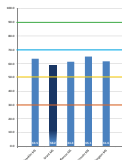
ENROLLMENT
809



GRANT MIDDLE SCHOOL

GRADE LEVELS
 P K 1 2 3 4 5
 6 7 8 9 10 11 12

ENROLLMENT
582



JEFFERSON MIDDLE SCHOOL

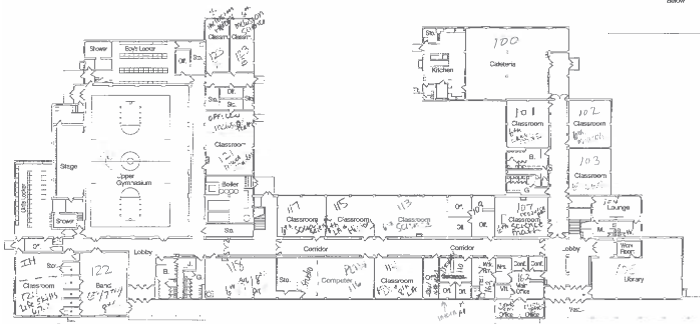
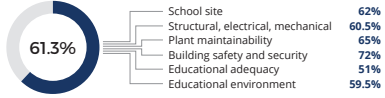
GRADE LEVELS



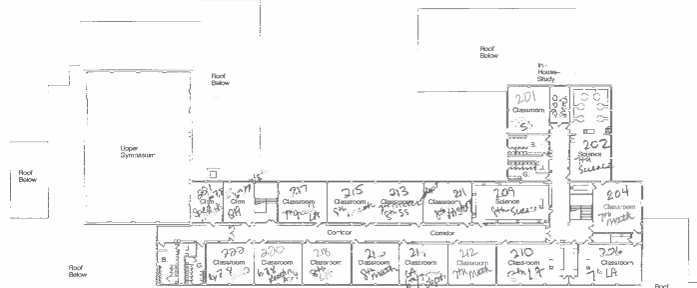
ENROLLMENT



FACILITY FUNCTIONAL SUITABILITY



First Floor Plan
Scale 1/32" = 1'-0"



Second Floor Plan
Scale 1/32" = 1'-0"

LINCOLN MAGNET SCHOOL

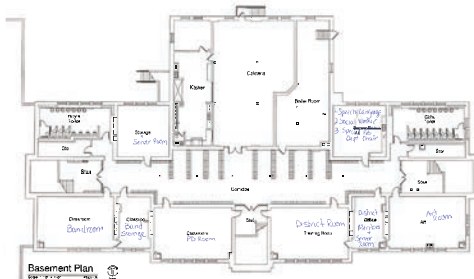
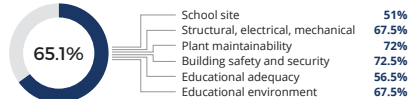
GRADE LEVELS



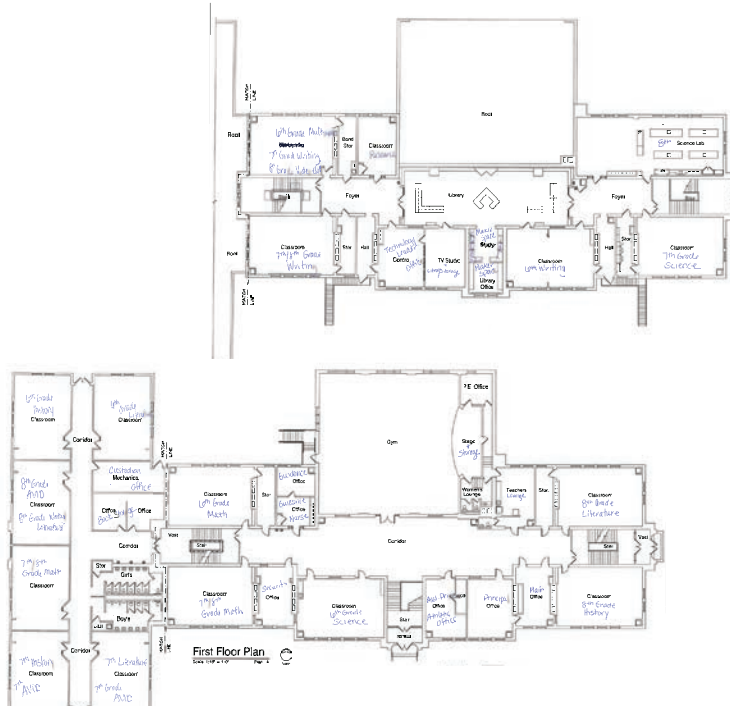
ENROLLMENT



FACILITY FUNCTIONAL SUITABILITY



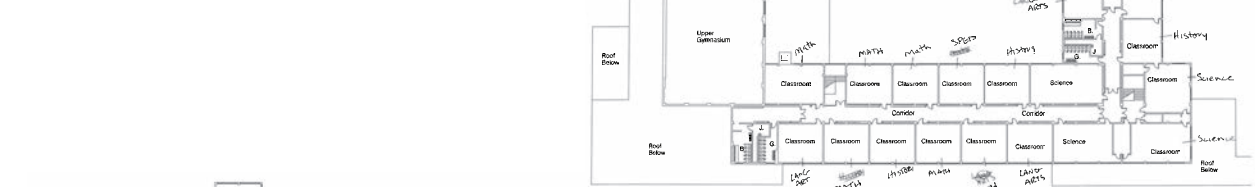
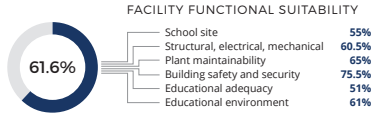
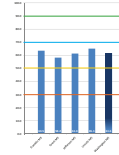
Basement Plan
Scale 1/32" = 1'-0"



First Floor Plan
Scale 1/32" = 1'-0"

supplemental information

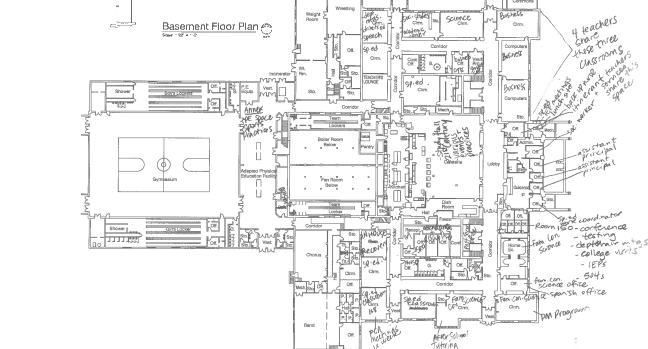
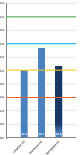
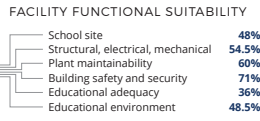
WASHINGTON MIDDLE SCHOOL



First Floor Plan
Scale 1" = 10'-0"

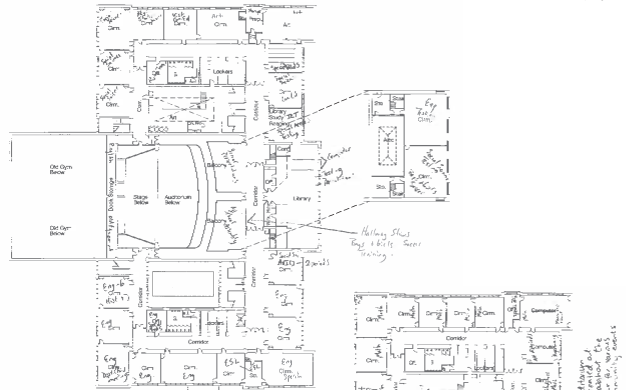
Second Floor Plan
Scale 1" = 10'-0"

SPRINGFIELD HIGH SCHOOL



Basement Floor Plan
Scale 1" = 10'-0"

First Floor Plan
Scale 1" = 10'-0"



Third Floor Plan
Scale 1" = 10'-0"



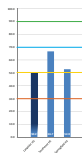
Second Floor Plan
Scale 1" = 10'-0"

LANPHIER HIGH SCHOOL

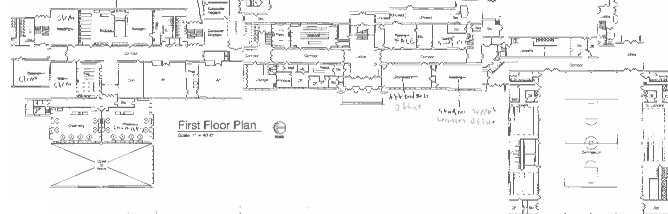
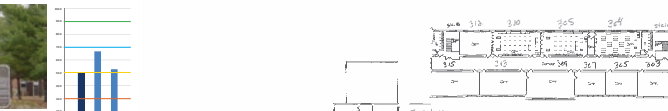
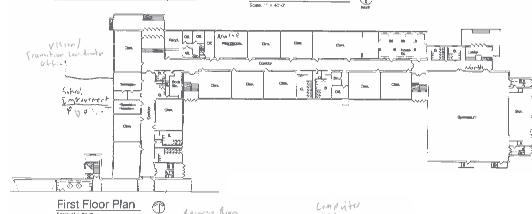
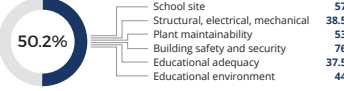
GRADE LEVELS



ENROLLMENT



FACILITY FUNCTIONAL SUITABILITY

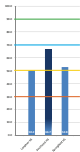


SOUTHEAST HIGH SCHOOL

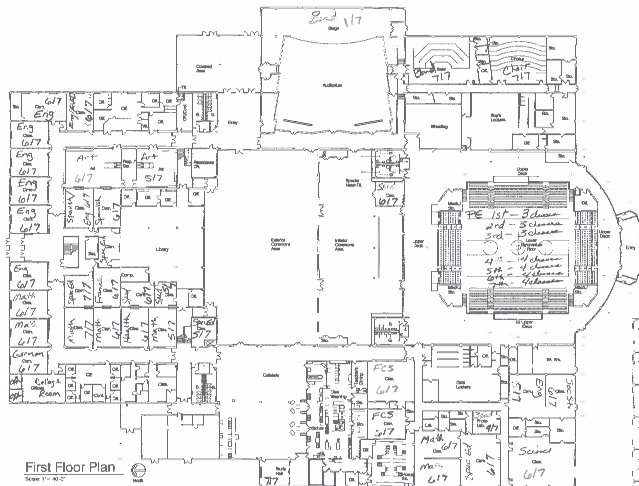
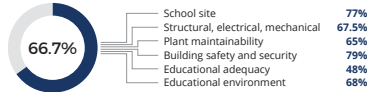
GRADE LEVELS



ENROLLMENT



FACILITY FUNCTIONAL SUITABILITY



Second Floor Plan (Scale 1/4" = 10'-0")

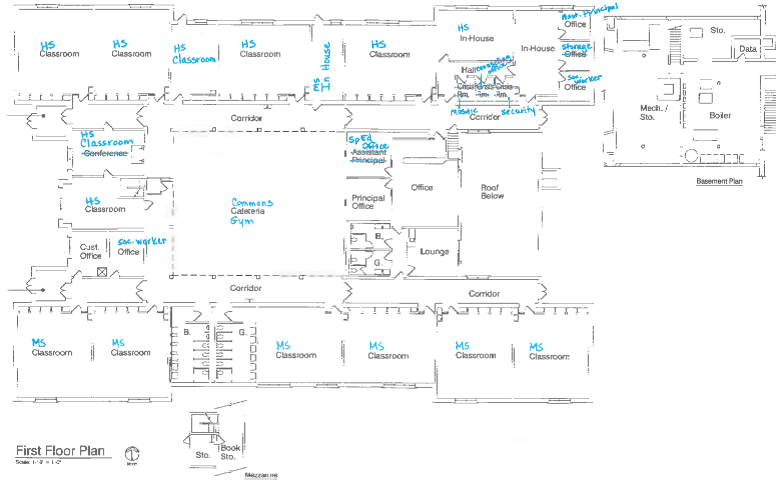
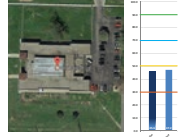
Supplemental information

DOUGLAS



FACILITY FUNCTIONAL SUITABILITY

School site	53%
Structural, electrical, mechanical	58%
Plant maintainability	58%
Building safety and security	64%
Educational adequacy	14.5%
Educational environment	36%

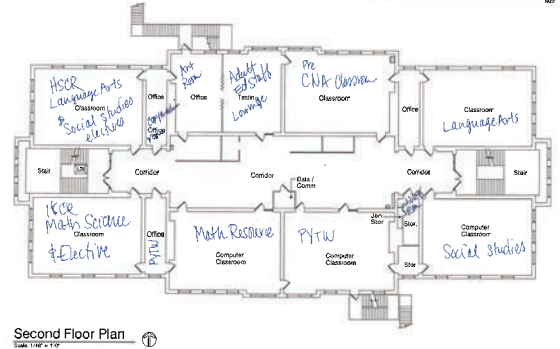
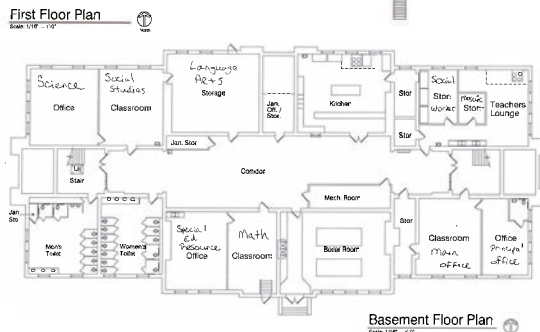
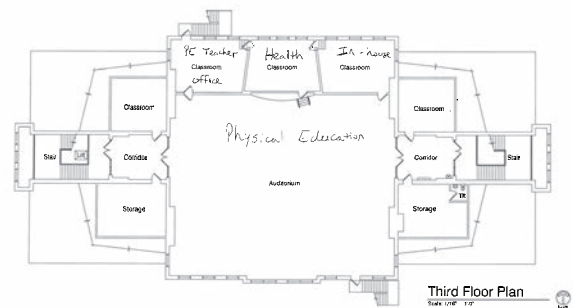
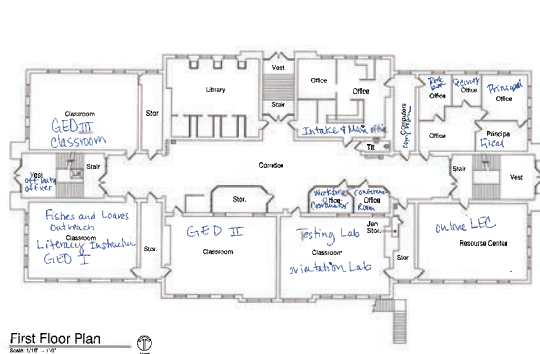
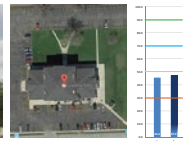


LAWRENCE EDUCATION CENTER/ SPRINGFIELD LEARNING ACADEMY

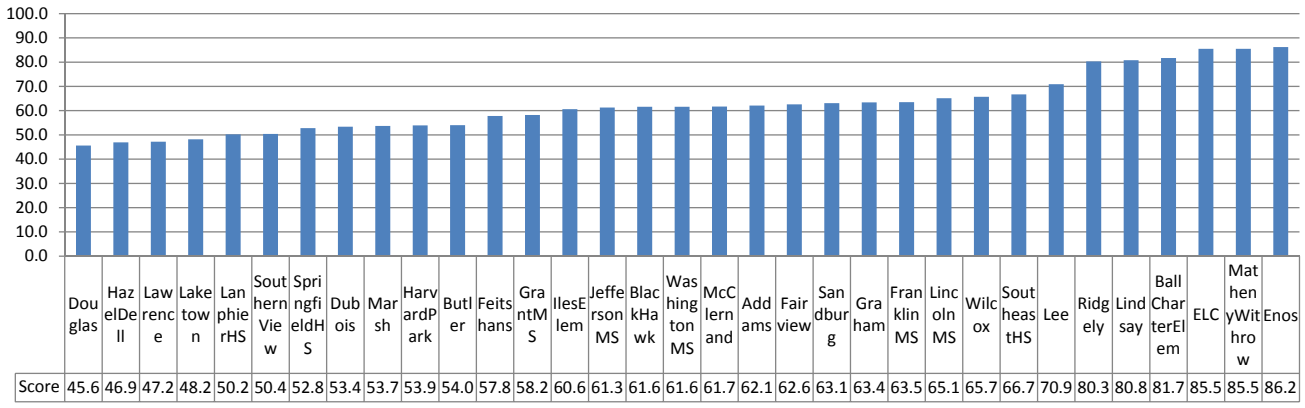


FACILITY FUNCTIONAL SUITABILITY

School site	52%
Structural, electrical, mechanical	56.5%
Plant maintainability	66%
Building safety and security	64.5%
Educational adequacy	21.5%
Educational environment	34.5%



Springfield 186 - Preliminary Educational Adequacy District-Wide - April 5, 2017



Springfield 186 - Preliminary Educational Adequacy by School Type - April 5, 2017

