



**EXPLORE.
LEAD.
LIFT.**



BLDD
ARCHITECTS



LIFT



Secondary
Students Innovate
for the Future

Share the Success Panel

Agenda

Scan to follow along.



Panel Introductions/Opening Video

History (Groundwork/Facility)

The Process

Floor-by-Floor

Governance/Funding

MEET YOUR PANEL

WHO
WE ARE



Tim Condron
Superintendent
Mattoon CUSD #2



Christy Hild
Director of Programming
Mattoon CUSD #2



Ashli Overton
BOE VICE PRESIDENT
Mattoon CUSD #2



Erika Weaver
BOE SECRETARY
Mattoon CUSD #2

MEET YOUR PANEL

WHO
WE ARE



Steve Oliver, President
AIA, NCARB, LEED AP



Carson Durham, Lead Designer
Principal, AIA



WHY now?

LIFT has been a dream 30 years in the making.

- » Desire to create a regional learning center where high school students can **pursue their passions and interests beyond the classroom**
- » Opportunity to renovate 6-story, 50,000 s.f. Consolidated Communications building
- » **Work-ready programming and leadership training curriculum** created parallel to the design of the space

OPENING VIDEO





LIFT



HISTORY

THE GROUNDWORK

HISTORY

(THE GROUNDWORK)



Collaborative History

Consolidation of Resources

Visits to Career Centers

Legal Considerations & Funding

HISTORY

THE FACILITY

 **LIFT** LEADERS
INNOVATING
FOR
TOMORROW

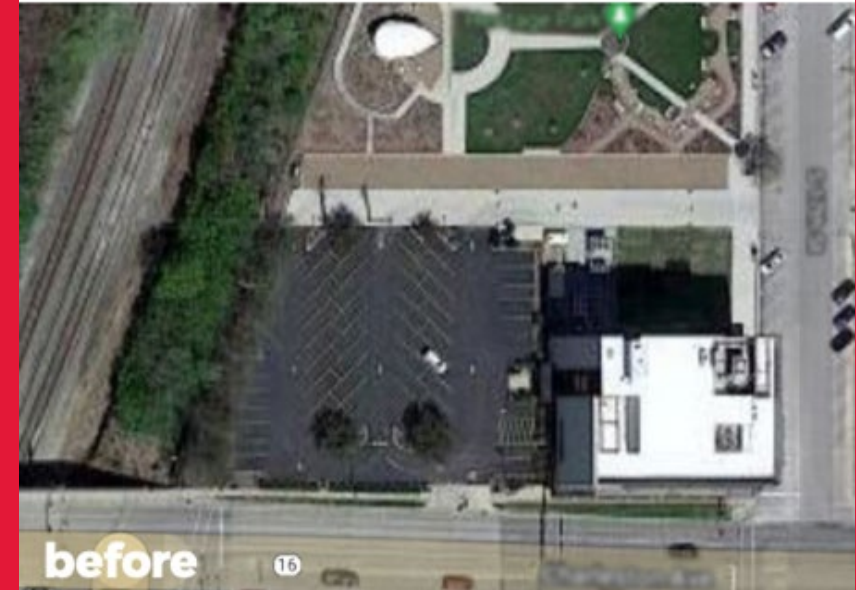


the challenge

WHAT? →

Located in the heart of a small town that is rich in history, the building is a **symbol of the community**. Since 1975, the facility previously housed an innovative company that specialized in connecting others through technology and a workplace that valued collaboration and idea sharing.

ELEVATING HISTORY



the solution



ADAPTIVE REUSE

Today, the iconic building and site provide the community with the opportunity to serve future generations. With the ability to use the site virtually as it was, design focus was directed to renovating the inside. The facility is now a direct reflection of the values and efforts that lived within its walls for years prior, **re-imagined to house a community of students from different backgrounds.**

Work-ready
programming

Leadership
Training

Serves 25+
Regional Districts

THE PROCESS



PROCESS



**Workforce Needs &
Economic Driver**

**Advisory Groups & Key
Partnerships**

**Competency-Based
Education & Leader in Me**

**Programming Commitments
& Design**

FLOOR BY FLOOR

CULINARY/DINING

INNOVATION ATRIUM

CHILD CARE

COMMUNICATIONS

the **timeline**

2021
April-June

building acquisition/secure
partnerships

2021
July-Oct

design

2021
Nov-Dec

bidding/award process

2022
Jan-Aug

construction

LEVEL UP

ELEVATING SUCCESS

Often, programs like these are siloed or cut due to a lack of resources or funding in rural districts. Through the creation of seven state-of-the-art learning labs over seven levels, the innovation and technology center allows the programs to work and thrive together in a single facility. There are 28 surrounding rural districts that have access to these incredible program resources, fostering **collaboration**, **innovation**, and **community**.

7

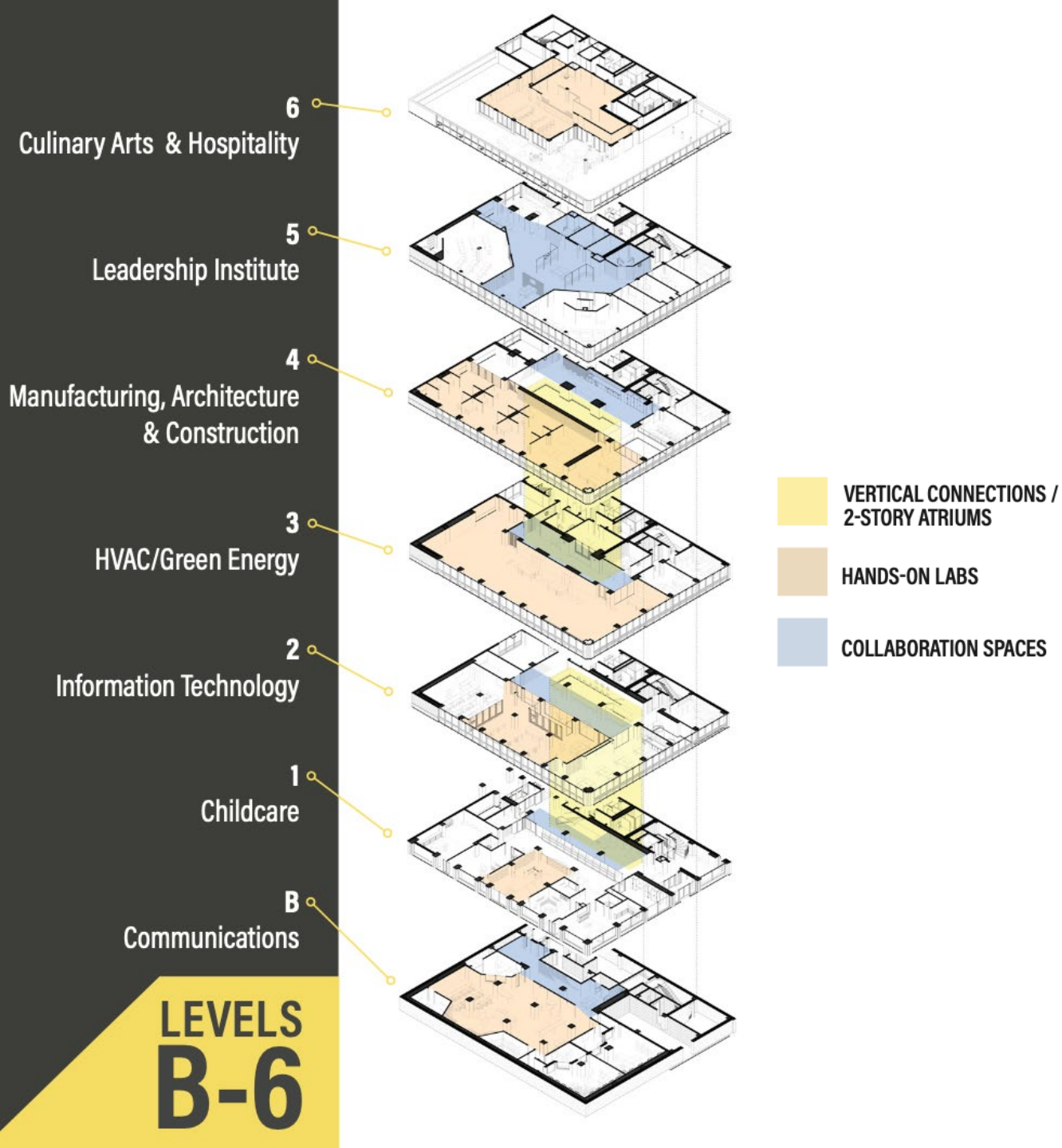
state-of-the-art learning labs

7

levels of innovation and learning

28

surrounding districts have access to the center



ELEVATING COMMUNITY

INTERIOR

MAIN ENTRY /
CHILDCARE

“The idea that our community now offers a regional technology and innovation facility that can provide candidates with real skills and training directly out of high school is very exciting.”

— Community Company / Facility Partner



ELEVATING COMMUNITY



The first floor entry and second floor are connected through **two-story atriums that allow the liveliness and natural lighting of the building to flow vertically**. On the north side of the first floor is a lobby with seating areas and a museum display noting the community history of the facility.

BASEMENT

INTERIOR

COMMUNICATIONS



BROADCASTING & VIDEO EQUIPMENT

ON
AIR

Basement: Hands-on learning and flexibility are key to success at this facility. A small performance stage equipped with adjustable lights allows students to practice performing skills on center stage.

A large broadcasting and recording studio area is soundproofed and equipped with flexible seating and lighting. The space has an operable wall that can separate the areas into two individual spaces.



LEVEL
B

LEVEL 1

NOT YOUR TYPICAL DAYCARE

The childcare center has a centrally located engaging, indoor playground area. There are also four classrooms, each designed age-appropriately for infants and toddlers of varying ages.

FUN FACT

There are classrooms for each specific age group listed below:

- 3 - 6 months
- 7 months - 1 year
- 2 - 3 years

A daycare to support the working community offers real-world experience to students in the Childcare Pathway. The space is equipped with a secure entry and administration area for visitors to check-in before accessing the area.

INTERIOR

CHILDCARE



LEVEL 1

LEVEL 2

TEAM | WORK

An **open collaboration zone** provides students with a quiet and flexible area to work together on various projects. A large **community meeting room** is located on this level for students and community members to host presentations and meetings. The IT lab has a glass mainframe and provides students with the technology needed to learn to code.



LEVELS OF COLLABORATION



INTERIOR
INFORMATION
TECHNOLOGY



LEVEL 2

LEVEL 3

BUILDING FOR THE FUTURE

This level supports the HVAC/Green Energy program through a large HVAC lab equipped with a chiller, boiler, solar panel, and multiple table stations for students to collaborate. **Students in this program learn to build for the future**, and even had the opportunity to learn the ins-and-outs of electric vehicles in the classroom. They were then able to build a fully functional, street-legal EV in the lab!



INTERIOR

HVAC /
GREEN ENERGY

SUCCESS STORY

Meet Logan - HVAC & Electric Vehicle Pathway, 2022/2023

- Was connected with a partnering company through the center, interviewed for a full-time apprenticeship as an Industrial Maintenance Technician, tested, and got the position.
- Will be working full-time, and the company will also send him to a local community college for his Industrial Maintenance Certification, giving him a raise once he finishes!



LEVEL 3

LEVEL 4



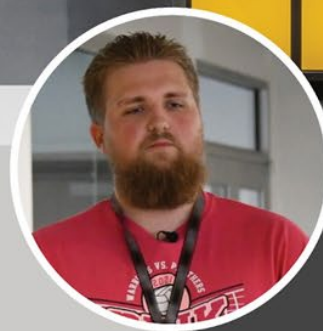
A 3,072 SF Manufacturing, Architecture, and Construction space is equipped with movable lab stations and connected to a flex lab for students to get hands-on experience. Abundant natural daylight and vibrant graphics help to create an engaging learning space.

**INTERIOR
MANUFACTURING
ARCHITECTURE &
CONSTRUCTION**

HANDS-ON EXPERIENCE



- Was accepted into the Local 149 Plumbers and Pipe-Fitters Commercial Construction Apprenticeship Program as a 1st year apprentice after taking classes at the center.
- Will get paid and receive a benefits package while he continues to learn trade specific training!



**LEVEL
4**

"KITCHEN TABLE" BREAK SPACES



ELEVATING COLLABORATION



"Kitchen table" break areas designed with soft seating and high-top tables and chairs offer students, faculty, and visitors an **opportunity to make connections** in a more relaxed environment. Flexible, open spaces and white board dividers allow the students to **work collaboratively**.

LEVEL 5

LEVEL 6

INTERIOR

CULINARY &
HOSPITALITY

BON APPÉTIT!

With a state-of-the-art kitchen students are offered the opportunity to have a five-star culinary educational experience. With large glass windows, the dining space includes tables and booths and an outdoor dining area overlooks the town. **The facility hopes to one day open the space as a student-run restaurant for the community.**



SUCCESS STORY

Meet Isaac - Culinary Arts

- Dreamed of leaving current job in fast food industry and working for a local, farm-to-table restaurant
- Applied for and was hired by the restaurant after the center hosted them for a cooking demonstration
- Currently employed by the local farm-to-table restaurant!



LEVEL 6



building for the future

hands-on experience



elevating collaboration

team work

GOVERNANCE



GOVERNANC E

MCUSD2 as Governing Agent

MCUSD2 as Fiscal Agent

Memoranda of Understanding

**Selection & Evaluation of
Personnel**

FUNDING

BUILDING
LEADERS



FUNDING



Building Purchase

Building Renovation

Operations

Student Tuition

SUCCESS STORIES





A photograph of a modern, multi-story office building at dusk. The building has a white facade with dark window frames and is illuminated from within, showing warm interior lights. A large red frame is overlaid on the image, and the word "QUESTIONS?" is written in white, bold, sans-serif capital letters across the center. The building is situated on a street corner with trees and a traffic light visible in the background.

QUESTIONS?

contact us

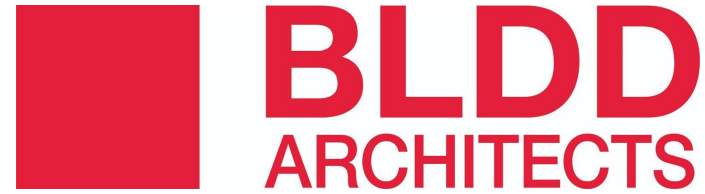


Christy Hild:
christyhild@mcusd2.com

Tim Condron:
timcondron@mcusd2.com

Ashli Overton:
ashlioverton@mcusd2.com

Erika Weaver:
erikaweaver@mcusd2.com



Steve Oliver
steve.oliver@bldd.com



Carson Durham
carson.durham@bldd.com

